

Essex Public Safety Building Project	Meeting Minutes
---	------------------------

Re: Town Building Committee Meeting	Date: August 21, 2019
Location: Town Hall, 3 rd Floor	Time: 7:00 PM

Attendees:

Name	Present	Name	Present
<u>Town Building Committee</u>		<u>Town Staff</u>	
Lisa O'Donnell, Committee Chair	✓	Brendhan Zubricki, Town Administrator	✓
Daniel Doucette, Fire Chief	✓	<u>Board of Selectmen</u>	
Paul Francis, Chief of Police	✓	Andrew Spinney	✓
Westley Burnham, Planning Board		Peter Phippen	✓
Nat Crosby, Historical Commission	✓	Ruth Pereen	✓
Colleen Enos, Member	✓	<u>NV5 (OPM)</u>	
Daniel Bruce, Member	✓	Tim Dorman	✓
Peter Levasseur, Member	✓	Mike Ulichney	
Mark McKenna, Member	✓	<u>JRA (Architect)</u>	
Stuart Pratt, Member	✓	Stewart Roberts	✓
Charles Storey, Member		Philip O'Brien	✓
Ramie Reader, Member	✓	Michael Bellefeuille	✓

- Questions from the public: None
- Approve minutes from July 24, 2019: Stuart Pratt moved to approve the minutes of the July 24, 2019 TBC Meeting. Ramie Reader seconded the motion, all were in favor and the motion passed unanimously.
- General design update from Johnson Roberts Associates (JRA)
 - Some of the subsurface detention basins were revised to be surface detention basins based on the Conservation Commission review.
 - Accessible parking space was added at the lower lot to provide handicap parking in direct proximity to both the upper and lower public entrances, which was requested by the Planning Board.
 - The landscape plan is being updated to coordinate with the revision to the stormwater detention basins and will include low maintenance meadow seed mix in the area of the basins.
 - It was discussed that the street trees will be modified and/or eliminated in some areas along the building to ensure that they will not block site lines of vehicles exiting the driveways.
 - A building sign will be located adjacent to the middle curb cut.

- It was agreed that a gate is not necessary in the fence along the east end of the parking area south of the apparatus bay as it would not be functional in the winter and the snow could more easily be lifted over the fence with a loader.
 - There was discussion about the configuration of the patrol room and it was agreed that it would remain open to the corridor to provide more flexibility.
 - Bathroom fixtures in the public toilet rooms will be automatic with hand dryers.
 - Exterior light fixture temperature to be 3,000K.
 - A detailed review with the department representatives will be held next week.
 - It was noted that the demolition and restoration scope for the existing public safety building will be broken out and bid separately when it is closer to the time this work would begin. The estimated cost will be carried as a separate budget line item. This will mitigate risk of incurring added costs if the move in date of the existing building is delayed for reasons outside of the control of the main bid package contractor and will provide more time to consider the restoration scope if budget allows.
4. Review permitting status with respect to Essex Conservation Commission, including discussion concerning the Commission's preferred storm water management system design.
- The Conservation Commission Public Hearing was held and the primary issue that was raised was concern from one of the Commission Members about the long term operation of subsurface detention systems.
 - Following the first meeting, the design team reviewed the stormwater management system and determined that some of the subsurface detention basins could be replaced with surface basins, but they would need to be constructed right up to the wetland line.
 - The Conservation Commission favored this revised configuration and issued the Order of Conditions at the second meeting, which is anticipated to be signed next week.
5. Review Planning Board Site Plan Review approval, including discussion of preferred exterior lighting color temperature.
- The Planning Board meeting went well and the Site Plan approval was issued with only minor revisions needed, including softer light temperature and the handicap parking configuration.
6. Discuss how our cost estimators are able to consider the project from the eyes of a contractor.
- It was noted that the cost estimators develop their estimates in the context of the project schedule and based on current market conditions and anticipated escalation.
7. Address updated design comments submitted by resident Edward Neal (following up on his May, 2019 comments), both at the last meeting and subsequently.
- Representatives from the Fire Department met with Ed Neal to review his comments and clarify the basis for some of the design decisions.
8. Discuss Selectmen's decision with respect to pre-construction removal of plants by residents: No formal direction will be provided from the Selectmen regarding the existing plants at 11 John Wise Ave.

9. Discuss continued, pre-construction use and management of property at 11 John Wise Avenue, including the results of the pre-demolition asbestos survey: It was noted that there is no new information to report, except that the hazardous materials survey has been completed and the results should be provided soon.
10. Review of Mass DOT present position with respect to proposed speed limit change: MassDOT has confirmed that the best approach to changing the speed limit would be to conduct a speed study after the new building is occupied.
11. Review project schedule, including status of specific permits and activities necessary to obtain building permit, and upcoming milestones, NV5: The schedule was reviewed and it was noted that things are progressing on track for a November bid date.
12. Review status of contractor prequalification process: The prequalification process is progressing and is scheduled to be completed in early September in advance of issuing the bid documents on September 25th.
13. Review updated budget for fixtures, furnishings, and equipment.
 - Based on the latest information, the project will continue to budget \$400k for FFE/Technology
 - It was noted that the antenna will most likely not be at ground level and they are currently considering mounting it on the roof.
14. Review of upcoming schedule (meetings and other events), including format and materials for upcoming public forums and plans for September 23 Special Town Meeting.
 - The next TBC meeting will be September 11, 2019
 - Two Public Forums are currently planned for September 12th and 17th. The presentation will be the same for both and will provide an overview of the building design and cost. It will also summarize the benefits of a combined facility. The Finance Committee will plan to have representation to discuss recommended financing approach and cost to tax payers.
 - It was noted that regionalization may also come up in the discussion.
15. Items not contemplated by the Chairman in advance of the meeting posting deadline: None
16. Public comment: None
17. Adjourn: Stuart Pratt moved to adjourn the meeting. Chief Francis seconded the motion, all were in favor and the meeting was adjourned at 8:23 PM.

Attachments:

- JRA Presentation
- Sign in list
- Agenda

-End of Minutes-



OFFICES NATIONWIDE

PROGRAM MANAGEMENT • CONSTRUCTION QUALITY ASSURANCE • INFRASTRUCTURE • ENERGY • ENVIRONMENTAL

Tim Dorman, NV5

Lisa O'Donnell, Committee Chair



OFFICES NATIONWIDE

PROGRAM MANAGEMENT • CONSTRUCTION QUALITY ASSURANCE • INFRASTRUCTURE • ENERGY • ENVIRONMENTAL

**JOHNSON
ROBERTS**
ASSOCIATES INC.

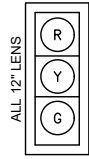
ARCHITECTS

Essex Public Safety Building

Essex, Massachusetts

60% Construction Documents Presentation

SIGNAL IDENTIFICATION

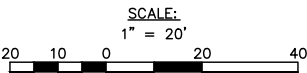
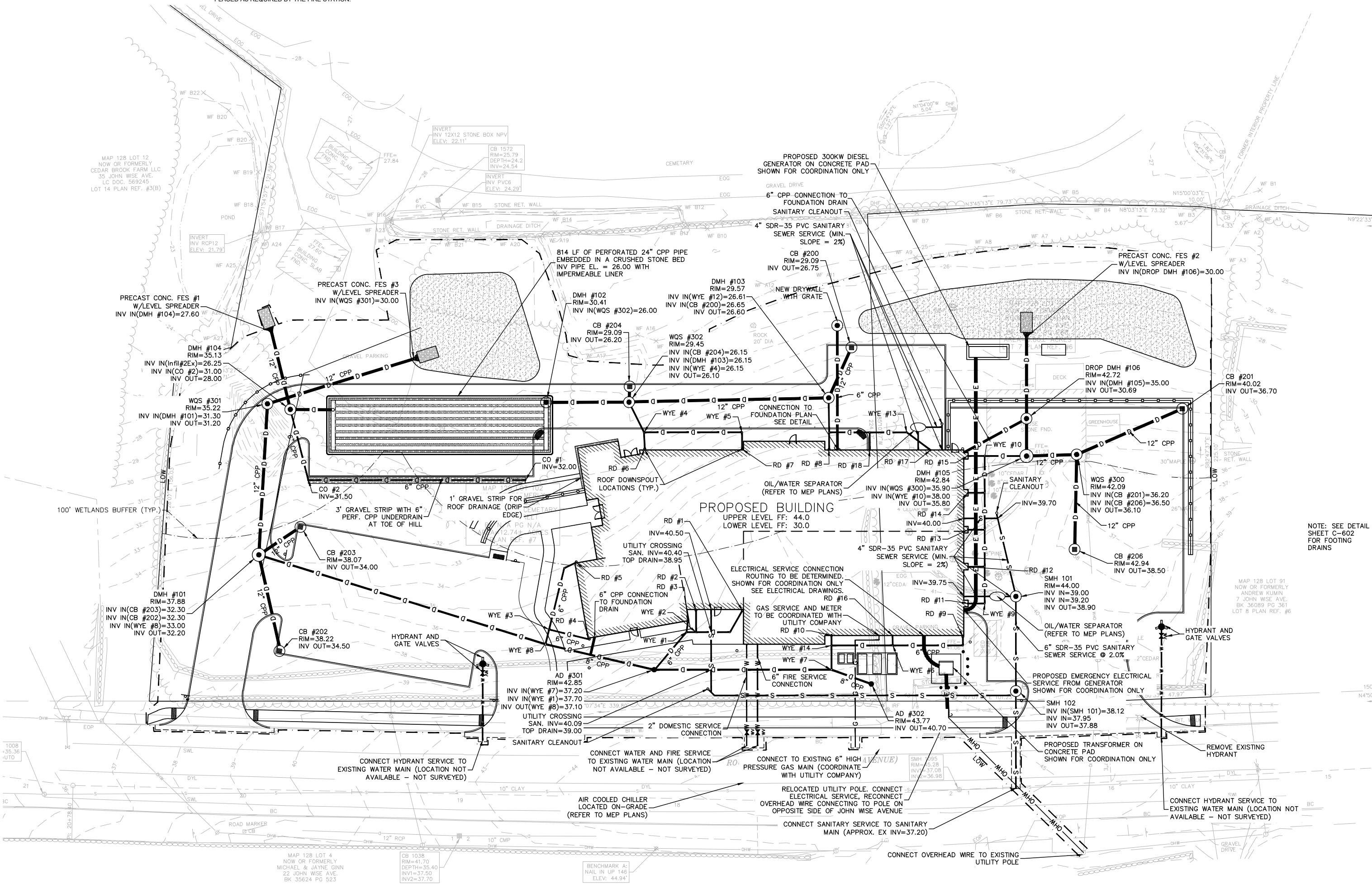


TRAFFIC SIGNAL NOTES:

1. ALL SIGNALS SHALL HAVE CUTAWAY TUNNEL VISORS.
2. ALL BACKPLATES SHALL HAVE A 3" RETROREFLECTIVE BORDER.
3. ALL SIGNAL EQUIPMENT SHALL BE PAINTED BLACK IN A CONTROLLED ENVIRONMENT.

EMERGENCY VEHICLE PRE-EMPTION OPERATION:

1. EMERGENCY VEHICLE PRE-EMPTION SHALL BE ACTUATED BY AN OPTICAL SIGNAL FROM AN OPTICAL EMITTER MOUNTED ON AN EMERGENCY VEHICLE AND RECEIVED BY AN OPTICAL DETECTOR LOCATED AT INTERSECTION. A SEPARATE RECEIVING DETECTOR IS REQUIRED FOR EACH DETECTED APPROACH.
2. PRE-EMPTION SIGNALS FROM MULTIPLE APPROACHES SHALL BE SERVICED ON A FIRST DETECTED FIRST SERVED BASIS.
3. IN RESPONSE TO A PRE-EMPTION SIGNAL RECEIVED AT AN INTERSECTION BY AN OPTICAL DETECTOR, THE CONTROLLER SHALL TIME THE CLEARANCE INTERVALS OF THE ACTIVE PHASE (IF DIFFERENT THAT TO BE SERVICED) AND ADVANCE TO AND/OR HOLD IN EMERGENCY VEHICLE PRE-EMPTION PHASE UNTIL PRE-EMPTION SIGNAL CEASES. THE CONTROLLER SHALL THEN TIME CLEARANCES AND SIMILARLY SERVICE OTHER EMERGENCY VEHICLE PRE-EMPTION SEQUENCES IN THE ORDER RECEIVED (IF RECEIVED) OTHERWISE, RESUME NORMAL PREFERENTIAL PHASE SEQUENCE.
4. PRE-EMPTION MINIMUM GREENS SHALL BE SIX SECONDS.
5. NORMAL CLEARANCES SHALL BE PROVIDED ON PHASES THAT ARE TERMINATED BY PRE-EMPTION DEMAND.
6. ACTUAL TIMING FOR PRE-EMPTION SHALL BE DETERMINED IN THE FIELD IN COORDINATION WITH THE FIRE DEPARTMENT AND SHALL BE APPROVED BY THE TOWN OF DEDHAM PRIOR TO OPERATION.
7. THE LOCATION OF THE PUSH BUTTON PRE-EMPTION PANEL SHALL BE PLACED AS REQUIRED BY THE FIRE STATION.



Nitsch Engineering
www.nitscheng.com
2 Center Plaza, Suite 430
Boston, MA 02108
T: (617) 338-6863
F: (617) 338-6472

- Civil Engineering
- Land Surveying
- Transportation Engineering
- Structural Engineering
- Geotechnical Engineering
- Planning
- GIS

**JOHNSON
ROBERTS
ASSOCIATES INC.**

ARCHITECTS

15 PROPERZI WAY
SOMERVILLE, MA
02143-3228

Revisions:

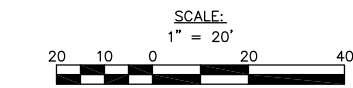
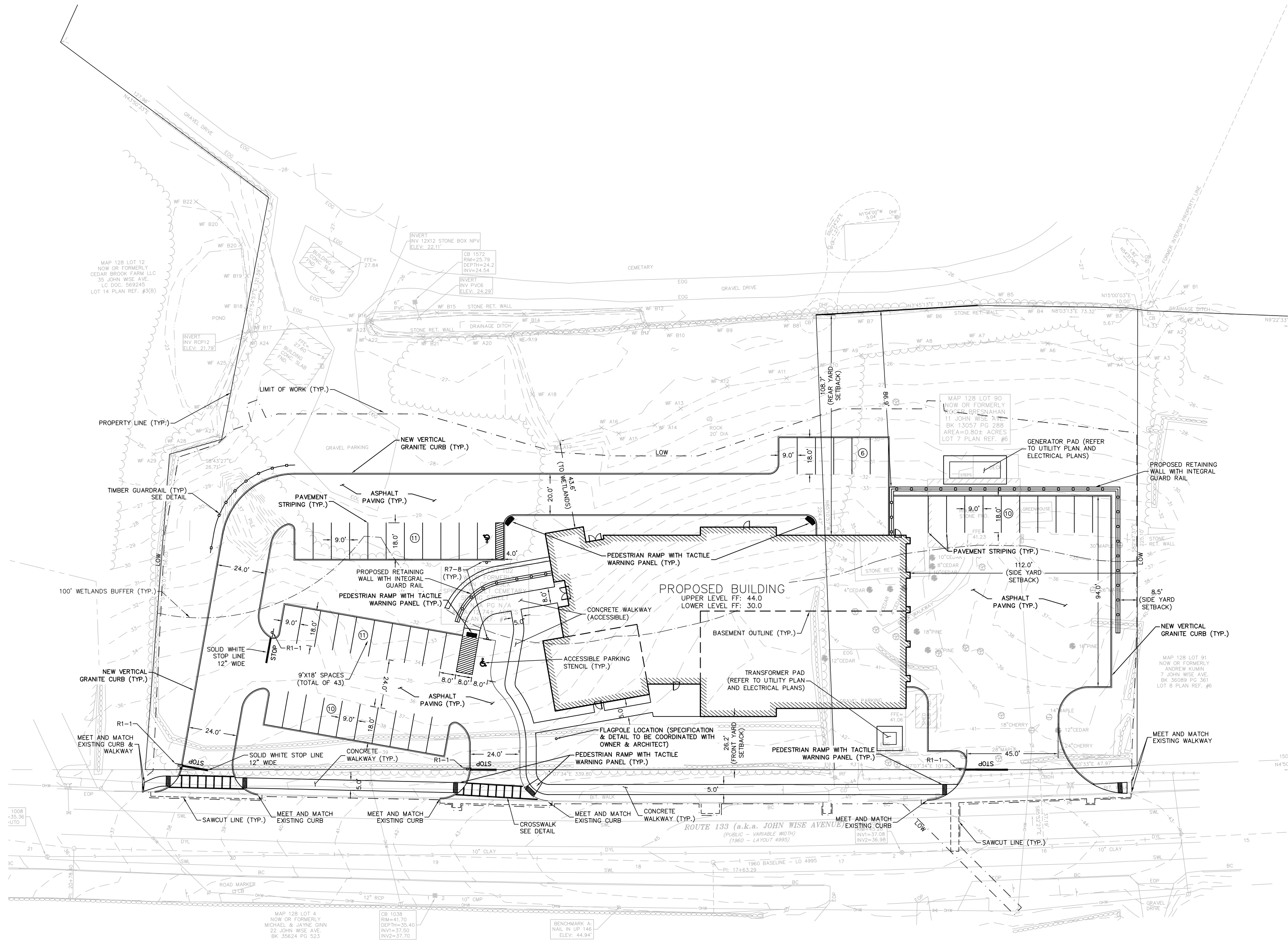
ESSEX PUBLIC
SAFETY
ESSEX, MA

Sheet
Title:
UTILITY PLAN

Date: 08-09-19 Drawn By: WS

Scale: 1"=20' Project No.: 13151

C-300



Nitch Engineering
www.nitcheng.com
2 Center Plaza, Suite 430
Boston, MA 02108
T: (617) 338-0063
F: (617) 338-6472

- Civil Engineering
- Land Surveying
- Transportation Engineering
- Structural Engineering
- Geotechnical Engineering
- Planning
- Design

**JOHNSON
ROBERTS
ASSOCIATES INC.**

ARCHITECTS

15 PROPERZI WAY
SOMERVILLE, MA
0 2 1 4 3 - 3 2 2 8

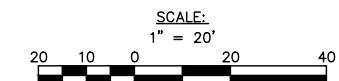
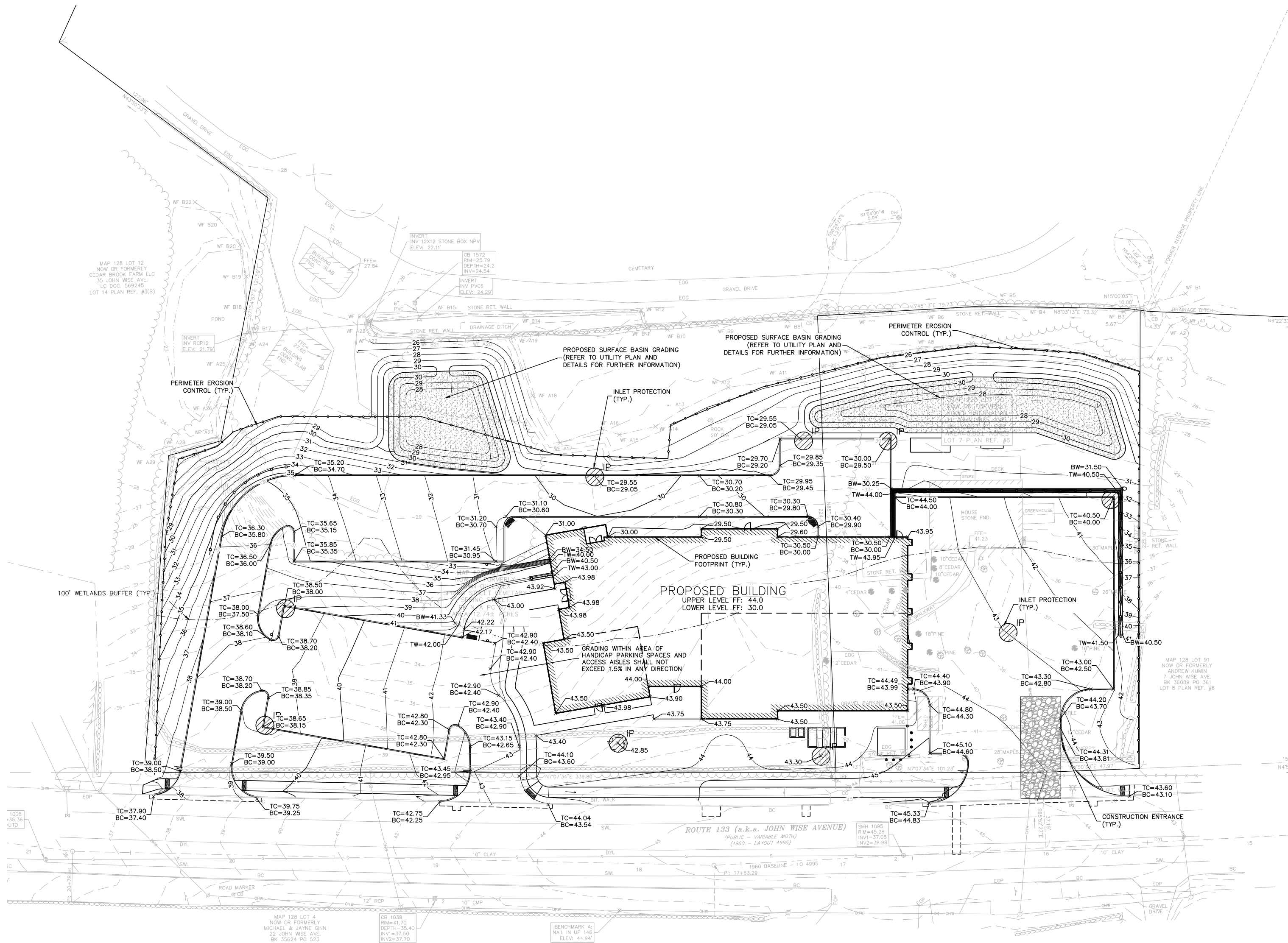
Revisions:

ESSEX PUBLIC
SAFETY
ESSEX, MA

Sheet
Title:
SITE PLAN

Date: 08-09-19 Drawn By: WS
Scale: 1"=20' Project No.: 13151

C-200



Nitsch Engineering
www.nitsch.com
2 Center Plaza, Suite 430
Boston, MA 02108
T: (617) 338-6063
F: (617) 338-6472

**JOHNSON
ROBERTS
ASSOCIATES INC.**
ARCHITECTS

15 PROPERZI WAY
SOMERVILLE, MA
0 2 1 4 3 - 3 2 2 8

Revisions:

ESSEX PUBLIC
SAFETY
ESSEX, MA

Sheet
Title:
**GRADING AND
EROSION
CONTROL PLAN**

Date: 08-09-19 Drawn By: WS

Scale: 1"=20' Project No.: 13151

C-400

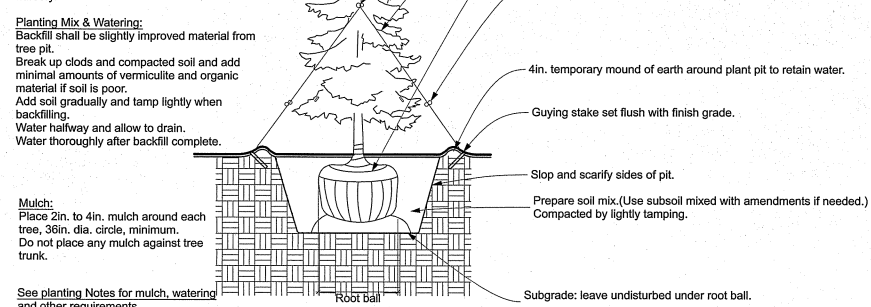
Note: Plant field dug evergreens at original north-south orientation and growing depth.

Tree Pit
Width of pit shall be three times width of rootball.
Place rootball on undisturbed soil.
Slope sides of pit and scarify.
Top of ball shall be at same grade as grown in nursery.

Planting Mix & Watering:
Backfill shall be slightly improved material from tree pit.
Break up clods and compacted soil and add minimal amounts of vermiculite and organic material if soil is poor.
Add soil gradually and tamp lightly when backfilling.
Water thoroughly and allow to drain.
Water thoroughly after backfill complete.

Mulch:
Place 2in. to 4in. mulch around each tree, 36in. dia. circle, minimum.
Do not place any mulch against tree trunk.

See planting Notes for mulch, watering and other requirements.



1 Coniferous Tree Planting Detail

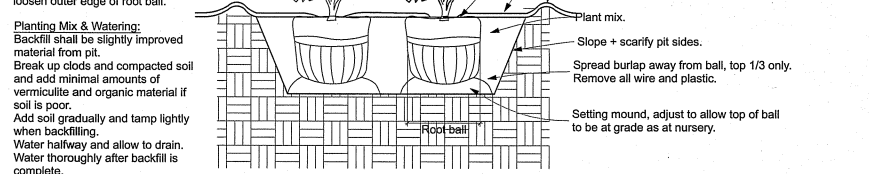
NOT TO SCALE

Pit for Balled or Potted Plants
Width of pit shall be three times width of root ball or container.
Place root ball on undisturbed soil.
Slope sides of pit and scarify.
Top of ball shall be same grade as grown in nursery.
Remove container from containerized material and carefully loosen outer edge of root ball.

Planting Mix & Watering:
Backfill shall be slightly improved material from pit.
Break up clods and compacted soil and add minimal amounts of vermiculite and organic material if soil is poor.
Add soil gradually and tamp lightly when backfilling.
Water thoroughly and allow to drain.
Water thoroughly after backfill complete.

Mulch:
Place 2in. to 4in. mulch around each tree, 36in. dia. circle, minimum.
Do not place any mulch against tree trunk.

See Planting Notes for mulch, watering and other requirements.



2 Shrub Planting Detail

NOT TO SCALE

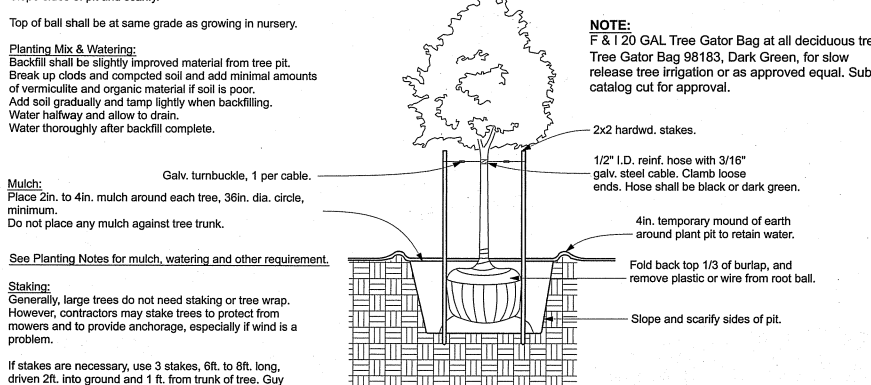
Tree Pit
Width of pit shall be three times width of rootball.
Place root ball on undisturbed soil.

Slope sides of pit and scarify.
Top of ball shall be at same grade as growing in nursery.

Planting Mix & Watering:
Backfill shall be slightly improved material from tree pit.
Break up clods and compacted soil and add minimal amounts of vermiculite and organic material if soil is poor.
Add soil gradually and tamp lightly when backfilling.
Water thoroughly and allow to drain.
Water thoroughly after backfill complete.

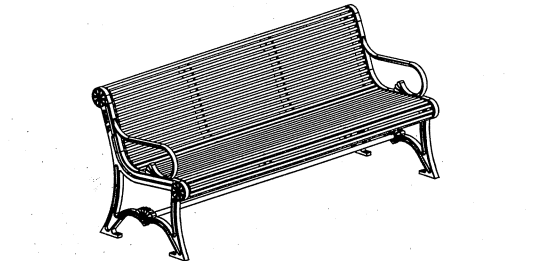
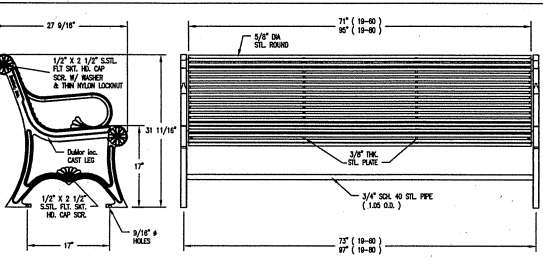
Mulch:
Place 2in. to 4in. mulch around each tree, 36in. dia. circle, minimum.
Do not place any mulch against tree trunk.

See Planting Notes for mulch, watering and other requirements.



3 Deciduous Tree Planting Detail

NOT TO SCALE



1) ALL STL. MEMBERS COATED W/ ZINC RICH EPOXY THEN FINISHED W/ POLYESTER POWDER COATING.
2) 1/2" x 3/4" x 3/4" DRIPDOWN ANCHOR BOLTS PROVIDED.
3) CUSTOM LETTERING AVAILABLE FOR RECESSED SIDE PANEL.
(37 TOTAL SPACES)

LENGTH OPTIONS:
6' BENCH
8' BENCH

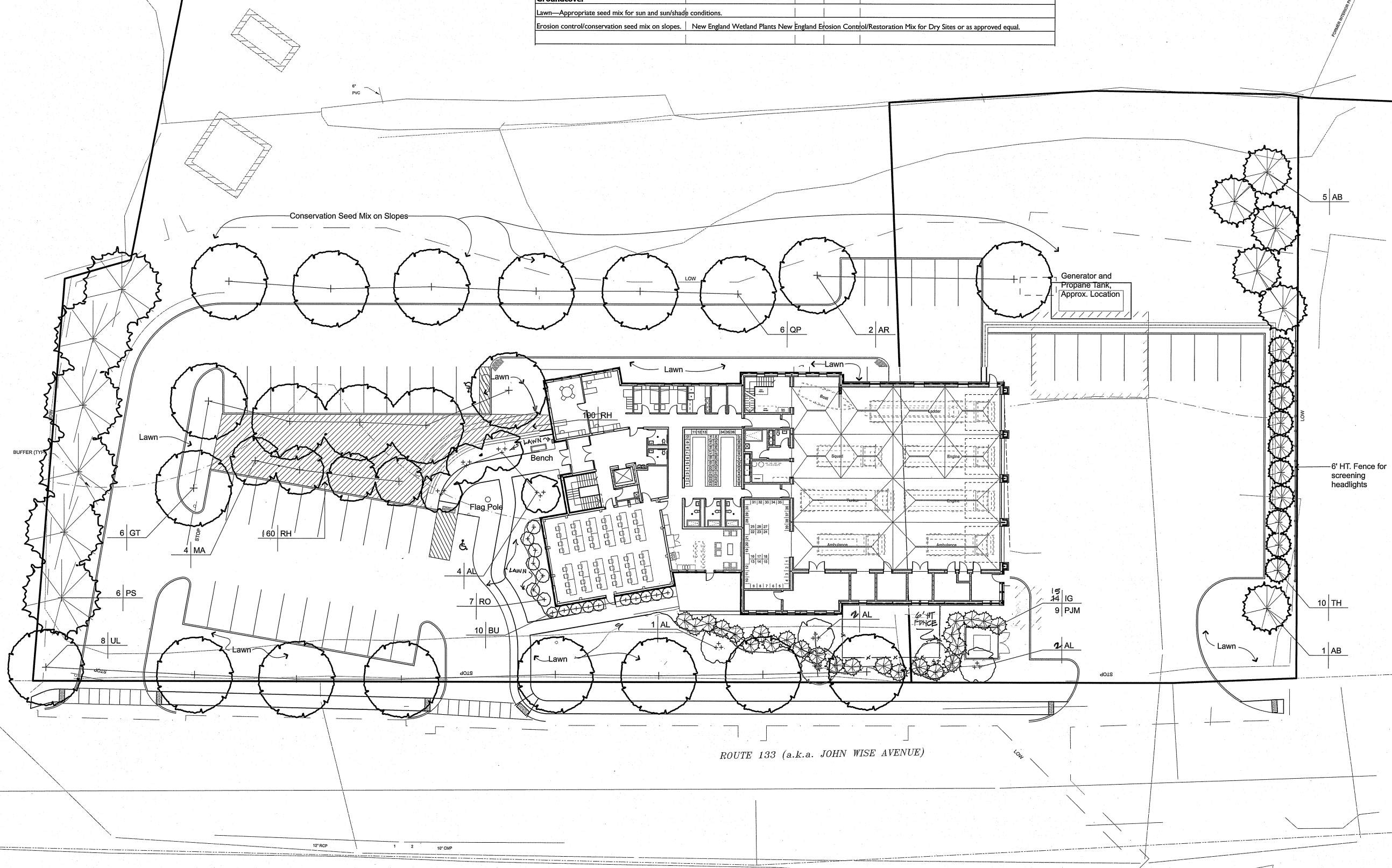
SCALE: NONE
DATE: 08/11/2019
DRAWN BY: KA
CHECKED BY: JH
PROJECT: 19-000-0142
SHEET: 1 OF 2

4 BENCH

PLANT LIST

Plants must be approved by landscape architect (LA). Substitutions shall be made by LA only, based on availability and condition of plant material.
LA may adjust plant locations in the field, depending on site conditions and for aesthetic reasons.

Symbol/Botanical Name	Common Name	No.	Size	Remarks
Trees				
AB/Abies balsamea	Balsam Fir	6	8-10'	Full to base
AR/Acer rubrum 'Red Sunset'	Red Sunset Red Maple	2	2.5-3"	
GT/Gleditsia tr. 'Shademaster'	Shademaster Honeylocust	6	2.5-3"	Matching, full head, straight trunks
MA/Malus 'Spring Snow'	Fruitless Crabapple	4	2.5-3"	
PS/Pinus strobus	White Pine	6	7-8'Ht.	Full to base; unhealed
QU/Quercus palustris	Pin Oak	6	2.5-3"	Matching; 1" branches at 6'Ht.
TH/Thuja nigra	Dark American Arborvitae	10	8-10'Ht.	Full to base (1-A. NBB4 5' x 6' GREEN GIANT)
UL/Ulmus Americana 'Valley Forge'	Valley Forge American Elm	8	2.5-3"	Matching; straight trunks
Shrubs				
AL/Amelanchier 'Autumn Brilliance'	Autumn Brilliance Serviceberry	1	7-8'Ht.	Matching; full to base
BU/Buxus 'Green Velvet'	Green Velvet Boxwood	10	2.5-3'Ht.	Matching; full
IG/Ilex glabra 'Compacta'	Compact Inkberry	1	3-3.5'Ht.	Matching; full to base
PM/Rhododendron PM	PM Rhododendron	9	3-3.5'Ht.	Matching; open habit
RH/Rhus typhina 'Grow Low'	Grow Low Sumac	100	2' x 10'	Random spacing/8' x 10' erosion control jute netting with plants
RO/Rhodododendron 'Olea Mezit'	Olea Mezit Rhododendron	7	3-3.5'Ht.	Full to base, matching; open habit
Groundcover				
Lawn—Appropriate seed mix for sun and sun/shade conditions.				
Erosion control/conservation seed mix on slopes. New England Wetland Plants New England Erosion Control/Restoration Mix for Dry Sites or as approved equal.				



**JOHNSON
ROBERTS
ASSOCIATES INC.**

ARCHITECTS

15 PROPERZI WAY
SOMERVILLE, MA
02143-3228

Kim Ahern
Landscape Architects

48 Foster Street
Littleton, Massachusetts 01460
Telephone 978.486.0040

Revisions:

**ESSEX PUBLIC
SAFETY**

ESSEX, MA

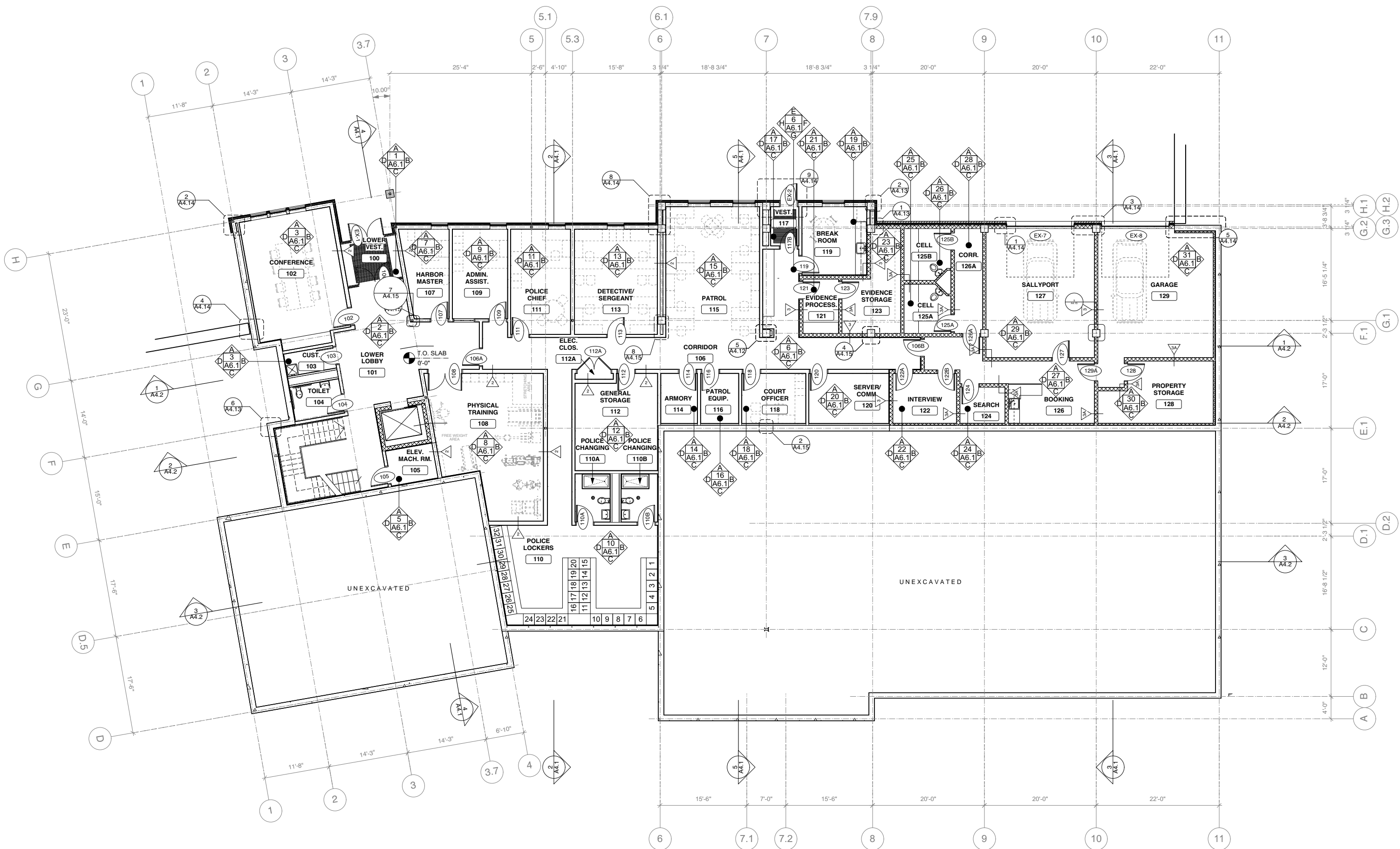
Sheet
Title:

**PLANTING
PLAN**

Date: 16-Aug-19 Drawn By: KA
Scale: 1" = 20'-0" Project No: 1817

L1.0

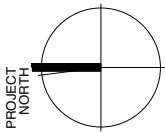
NOTES:
1. UNLESS OTHERWISE NOTED, INTERIOR
WALLS ARE TYPE 1. REFER TO DETAILS PLANS
WHERE INDICATED FOR ADDITIONAL WALL TYPES



1 LOWER LEVEL PLAN
A2.1 Scale: 1/8" = 1'-0"

JOHNSON
ROBERTS
ASSOCIATES INC.

ARCHITECTS
15 PROPERZI WAY
SOMERVILLE, MA
02143-3228



Revisions:

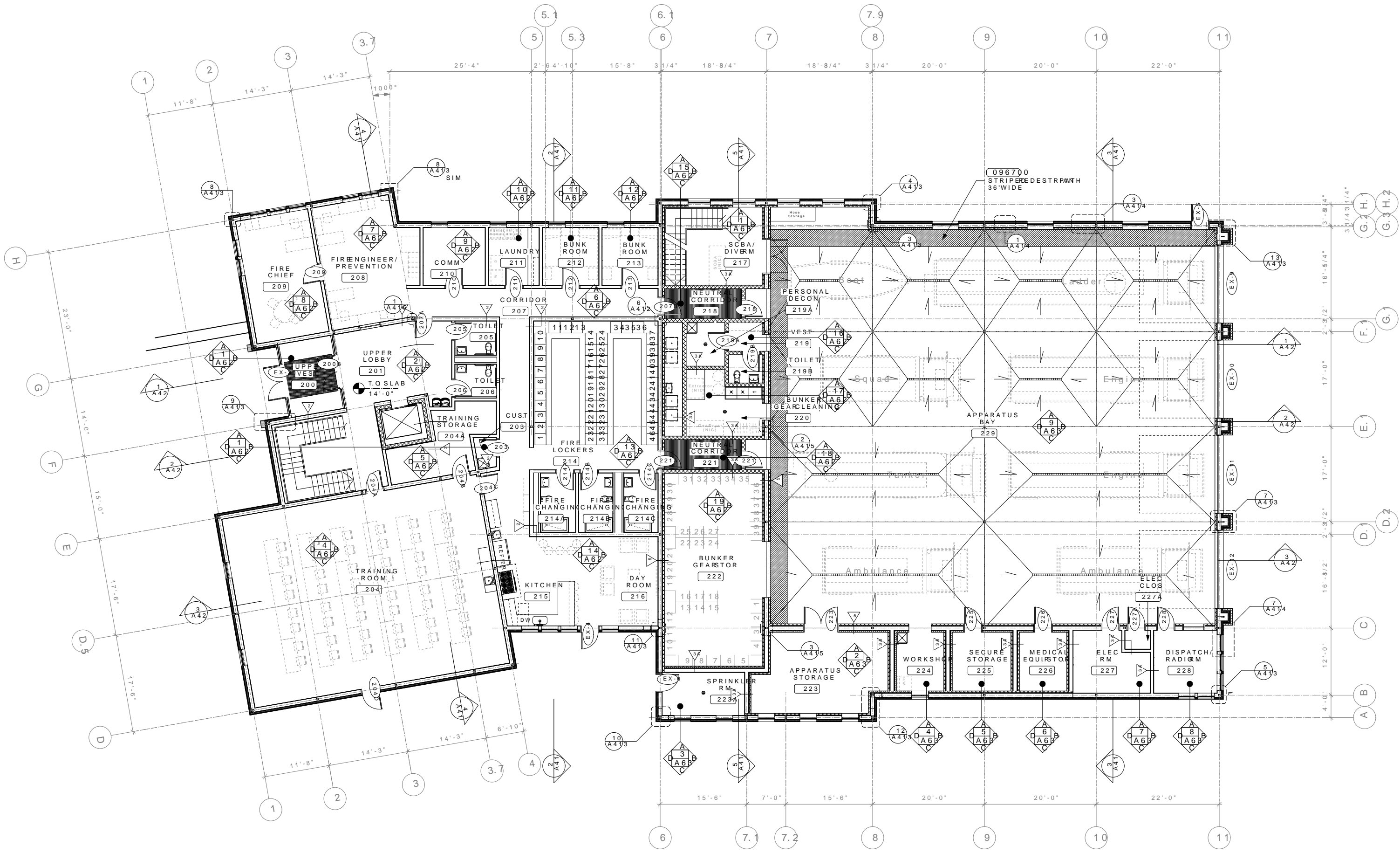
ESSEX PUBLIC
SAFETY
ESSEX, MA

Sheet
Title:
LOWER LEVEL
PLAN

Date: 16-Aug-19 Drawn By: MEB
Scale: 1/8" = 1'-0" Project No.: 1817

A2.1

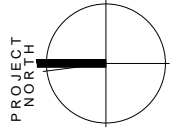
NOTES:
1. UNLESS OTHERWISE NOTED, INTERIOR WALLS ARE TYPE 1. REFER TO DETAILS AND SCHEDULES FOR ADDITIONAL TYPES.



1 UPPER LEVEL PLAN
A22 Scale: 1/8" = 1'-0"

JOHNSON
ROBERTS
ASSOCIATES INC.
ARCHITECTS

15 PROPERZI WAY
SOMERVILLE, MA
02143-3228



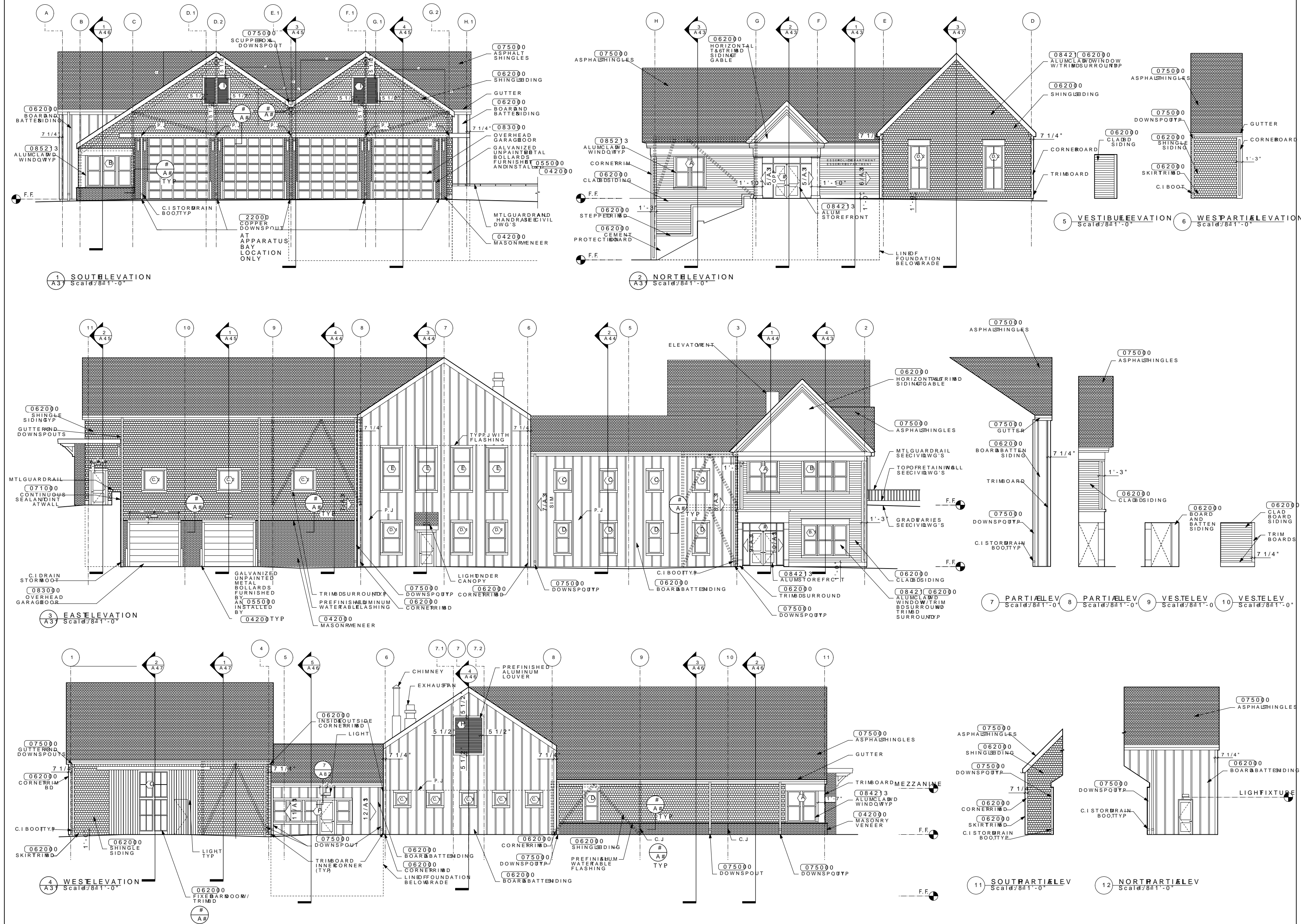
Revisions:

ESSEX PUBLIC
SAFETY
ESSEMA

Sheet
Title:
UPPER LEVEL
PLAN

Date: 16-Aug-10 Drawn by: MEB
Scale: 1/8" = 1'-0" Project No: 1817

A 2 2



**JOHNSON
ROBERTS
ASSOCIATES INC.**

ARCHITECTS

15 PROPERZI WAY
SOMERVILLE, MA
02143-3228

Revisions:

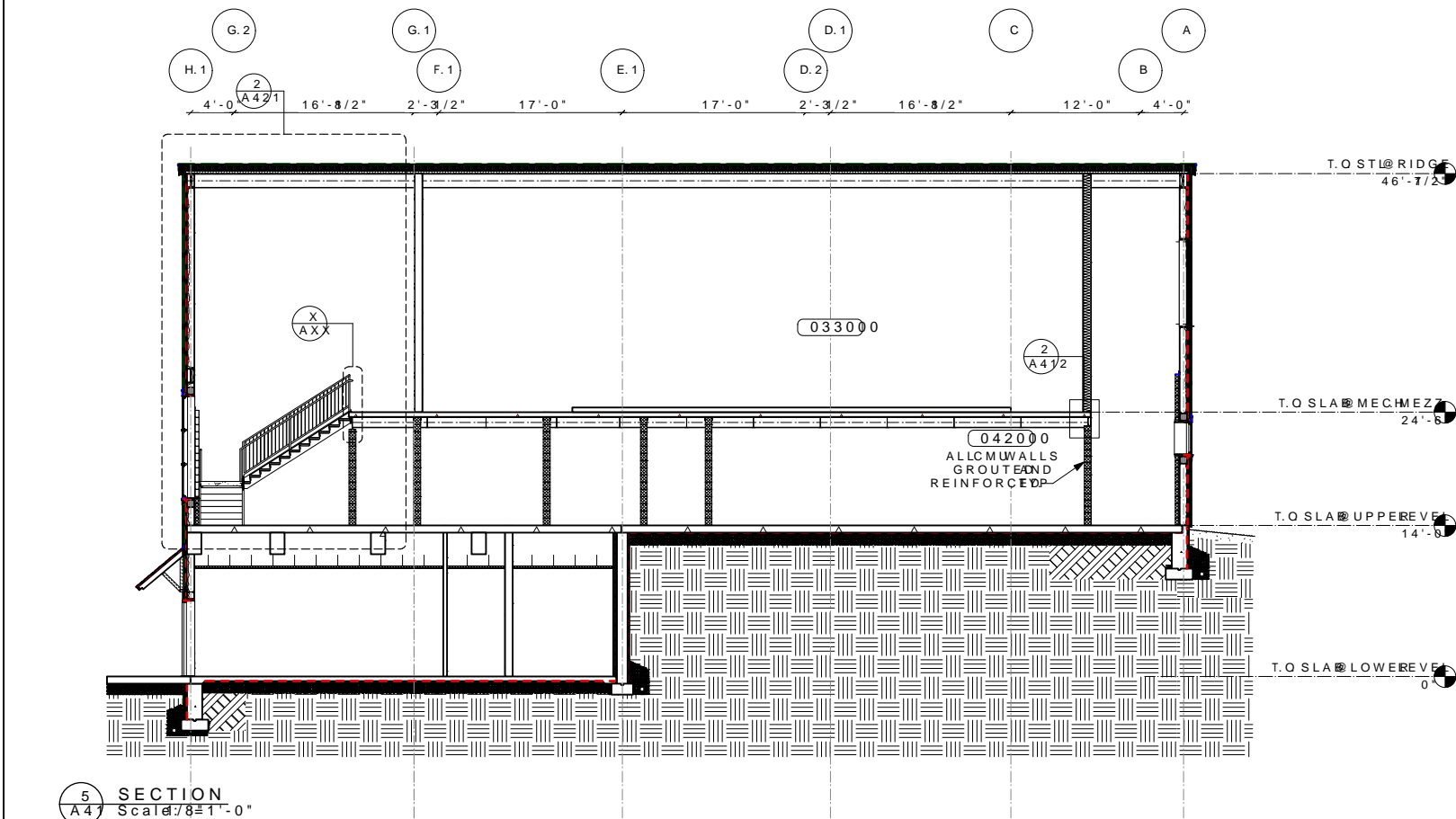
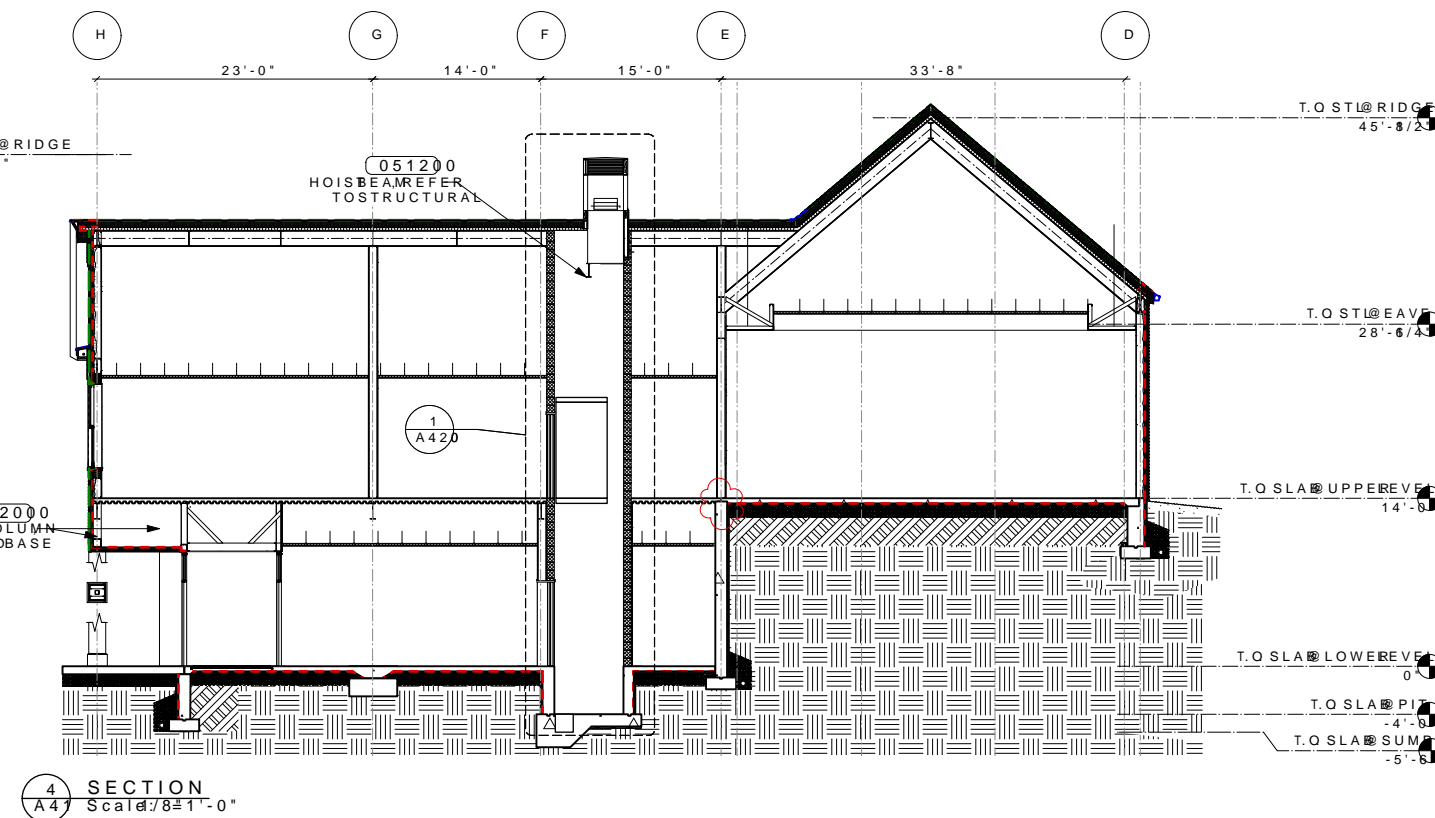
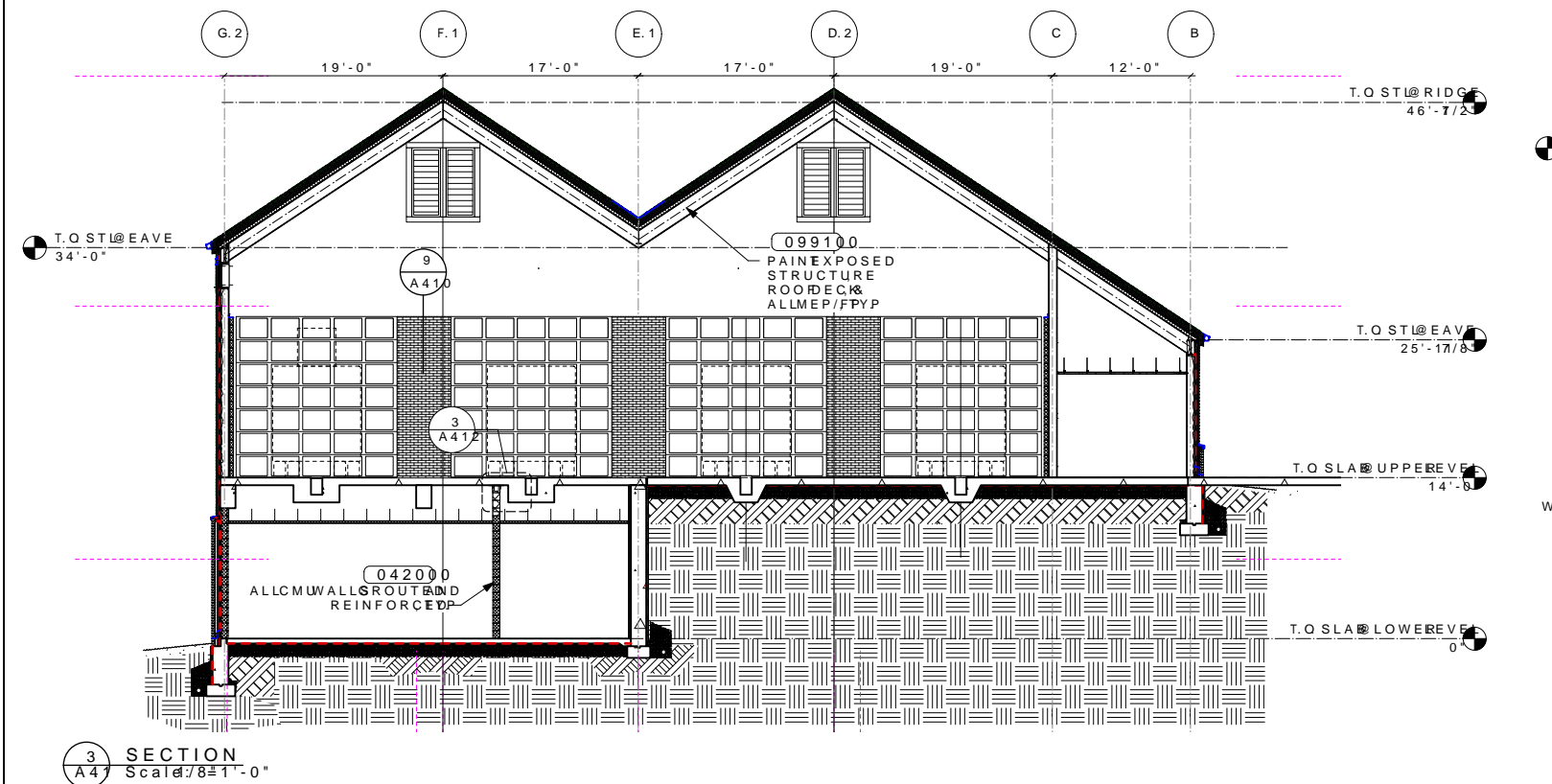
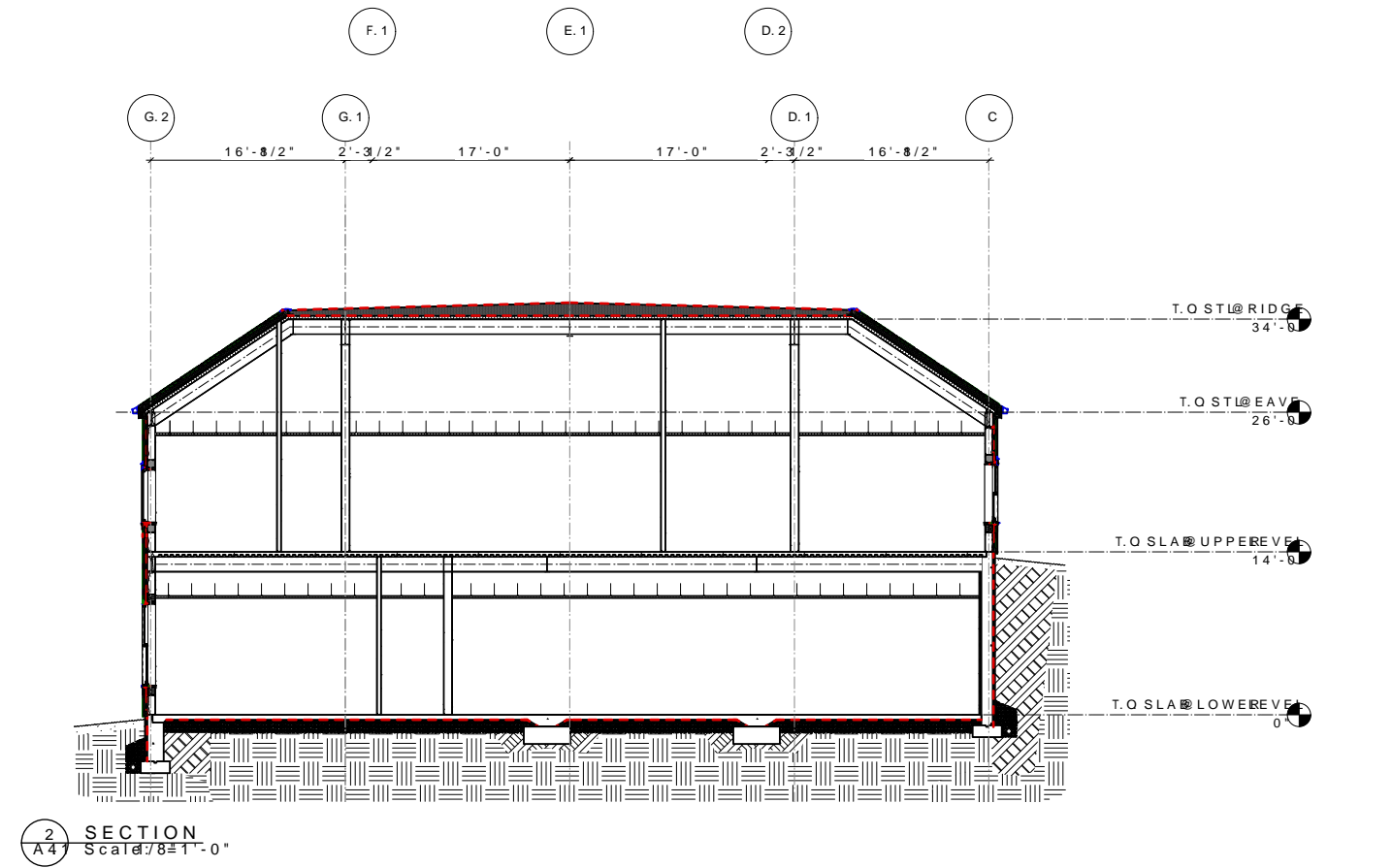
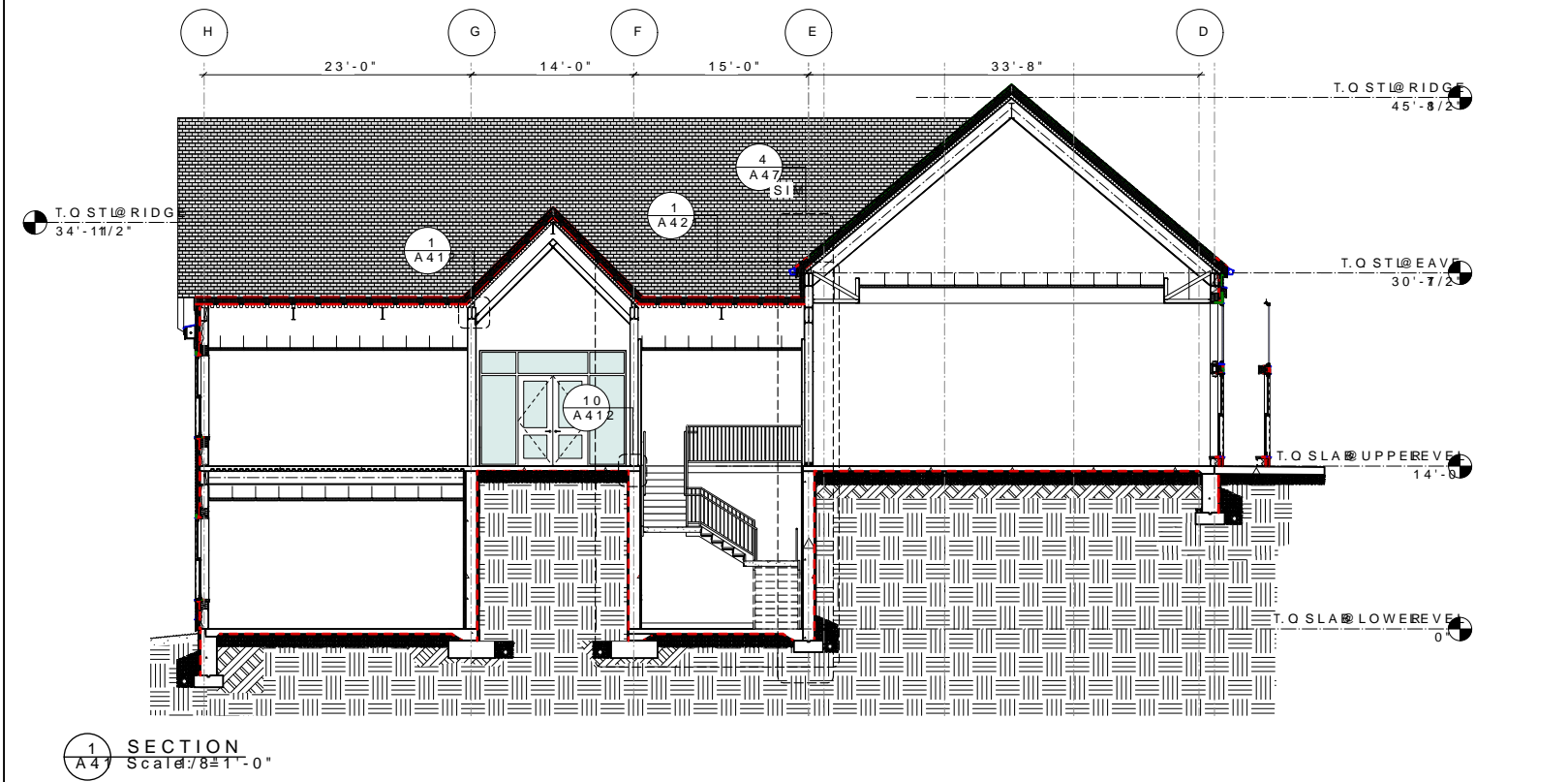
**ESSEX PUBLIC
SAFETY**

ESSEXMA

Sheet
Title
ELEVATIONS

Date 16-Aug-10 Drawn by MEB
Scale 1/8"=1'-0" Project No. 1817

A31



**JOHNSON
ROBERTS
ASSOCIATES INC.**

ARCHITECTS

15 PROPERZI WAY
SOMERVILLE, MA
02143-3228

Revisions:

ESSEX PUBLIC
SAFETY
ESSEX, MA

Sheet
Title:
SECTIONS

Date: 16-Aug-18 Draw By: MEB
Scale: 1/8"=1'-0" Project: 1817

A 4 1

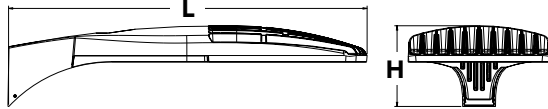
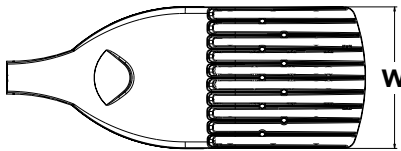


D-Series Size 1 LED Area Luminaire



Specifications

EPA:	1.01 ft ² (0.09 m ²)
Length:	33" (83.8 cm)
Width:	13" (33.0 cm)
Height:	7-1/2" (19.0 cm)
Weight (max):	27 lbs (12.2 kg)



Catalog Number

Notes

Type

Hit the Tab key or mouse over the page to see all interactive elements.

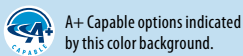
A+ Capable Luminaire

This item is an A+ capable luminaire, which has been designed and tested to provide consistent color appearance and system-level interoperability.

- All configurations of this luminaire meet the Acuity Brands' specification for chromatic consistency
- This luminaire is A+ Certified when ordered with DTL® controls marked by a **shaded background**. DTL DLL equipped luminaires meet the A+ specification for luminaire to photocontrol interoperability¹
- This luminaire is part of an A+ Certified solution for ROAM®2 or XPoint™ Wireless control networks, providing out-of-the-box control compatibility with simple commissioning, when ordered with drivers and control options marked by a **shaded background**¹

To learn more about A+, visit www.acuitybrands.com/aplus.

- See ordering tree for details.
- A+ Certified Solutions for ROAM require the order of one ROAM node per luminaire. Sold Separately: [Link to Roam](#); [Link to DTL DLL](#)



Ordering Information

EXAMPLE: DSX1 LED 60C 1000 40K T3M MVOLT SPA DDBXD

Series	LEDs	Drive current	Color temperature	Distribution	Voltage	Mounting
DSX1 LED	Forward optics 30C 30 LEDs (one engine) 40C 40 LEDs (two engines) 60C 60 LEDs (two engines) Rotated optics ¹ 60C 60 LEDs (two engines)	530 530 mA 700 700 mA 1000 1000 mA (1 A)	30K 3000 K 40K 4000 K 50K 5000 K AMBPC Amber phosphor converted ²	T1S Type I short T2S Type II short T2M Type II medium T3S Type III short T3M Type III medium T4M Type IV medium TFTM Forward throw medium TSVS Type V very short	MVOLT ³ 120 ⁴ 208 ⁴ 240 ⁴ 277 ⁴ 347 ⁴ 480 ⁵	Shipped included SPA Square pole mounting RPA Round pole mounting WBA Wall bracket SPUMBA Square pole universal mounting adaptor ⁴ RPUMBA Round pole universal mounting adaptor ⁴ Shipped separately KMA8 DDBXD U Mast arm mounting bracket adaptor (specify finish) ⁷

Control options	Other options	Finish (required)
Shipped installed PER NEMA twist-lock receptacle only (no controls) ⁴ PERS Five-wire receptacle only (no controls) ^{4,5} PER7 Seven-wire receptacle only (no controls) ^{6,8} DMG 0-10V dimming extend out back of horsing for external control (no controls) ¹⁰ DCR Dimmable and controllable via ROAM® (no controls) ¹¹ DS Dual switching ^{12,13} PIR Bi-level, motion/ambient sensor, 8-15' mounting height, ambient sensor enabled at 5ft ¹⁴ PIRH Bi-level, motion/ambient sensor, 15-30' mounting height, ambient sensor enabled at 5ft ¹⁴ PIR1FC3V Bi-level, motion/ambient sensor, 8-15' mounting height, ambient sensor enabled at 1ft ¹⁴	PIRH1FC3V Bi-level, motion/ambient sensor, 15-30' mounting height, ambient sensor enabled at 1ft ¹⁴ BL30 Bi-level switched dimming, 30% ^{15,15} BL50 Bi-level switched dimming, 50% ^{15,15} PNMTDD3 Part night, dim till dawn ¹⁶ PNMTSD3 Part night, dim 5 hrs ¹⁶ PNMTGD3 Part night, dim 6 hrs ¹⁶ PNMT7D3 Part night, dim 7 hrs ¹⁶ FAO Field adjustable output ¹⁷	Shipped installed HS House-side shield ¹⁸ WTS Utility terminal block ¹⁹ SF Single fuse (120, 277, 347V) ²⁰ DF Double fuse (208, 240, 480V) ²⁰ L90 Left rotated optics ²¹ R90 Right rotated optics ²¹ BS Bird spikes



D-Series LED Bollard



Specifications

Diameter:	8" Round (20.3 cm)
Height:	42" (106.7 cm)
Weight (max):	27 lbs (12.25 kg)



Ordering Information

EXAMPLE: DSXB LED 16C 700 40K SYM MVOLT DDBXD

Series	LEDs	Drive current	Color temperature	Distribution	Voltage	Control options	Other options	Finish (required)
DSXB LED	Asymmetric 12C 12 LEDs ¹ Symmetric 16C 16 LEDs ²	350 350 mA 450 450 mA ^{3,4} 530 530 mA 700 700 mA	30K 3000 K 40K 4000 K 50K 5000 K AMBPC Amber phosphor converted AMBLW Amber limited wavelength ^{3,4}	ASY Asymmetric ¹ SYM Symmetric ²	MVOLT ⁵ 120 ⁶ 208 ⁶ 240 ⁶ 277 ⁶ 347 ⁴	Shipped installed PE Photoelectric cell, button type DMG 00-10v dimming wires pulled outside fixture (for use with an external control, ordered separately) ELCW Emergency battery backup ⁶	Shipped installed SF Single fuse (120, 277, 347V) ^{4,7} DF Double fuse (208, 240V) ^{4,7} H24 24" overall height H30 30" overall height H36 36" overall height FG Ground-fault festoon outlet L/AB Without anchor bolts L/AB4 4-bolt retrofit base without anchor bolts ⁵	DWHXD White DNAXD Natural aluminum DDBXD Dark bronze DBLXD Black DDBTXD Textured dark bronze DBLBXD Textured black DNATXD Textured natural aluminum DWHGXD Textured white

Accessories

Ordered and shipped separately.

MRAB U Anchor bolts for DSXB⁴

NOTES

- Only available in the 12C, ASY version.
- Only available in the 16C, SYM version.
- Only available with 450 AMBLW version.
- Not available with ELCW.
- MVOLT driver operates on any line voltage from 120-277V (50/60 Hz). Specify 120, 208, 240 or 277 options only when ordering with fusing (SF, DF options), or photocontrol (PE option).
- Not available with 347V. Not available with fusing. Not available with 450 AMBLW.
- Single fuse (SF) requires 120, 277, or 347 voltage option. Double fuse (DF) requires 208 or 240 voltage option.
- MRAB U not available with L/AB4 option.



D-Series Size 1 LED Wall Luminaire

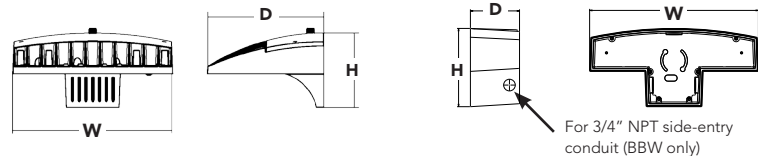


Specifications Luminaire

Width:	13-3/4" (34.9 cm)	Weight:	12 lbs (5.4 kg)
Depth:	10" (25.4 cm)		
Height:	6-3/8" (16.2 cm)		

Back Box (BBW, ELCW)

Width:	13-3/4" (34.9 cm)	BBW Weight:	5 lbs (2.3 kg)
Depth:	4" (10.2 cm)	ELCW Weight:	10 lbs (4.5 kg)
Height:	6-3/8" (16.2 cm)		



For 3/4" NPT side-entry conduit (BBW only)

Ordering Information

EXAMPLE: DSXW1 LED 20C 1000 40K T3M MVOLT DDBTXD

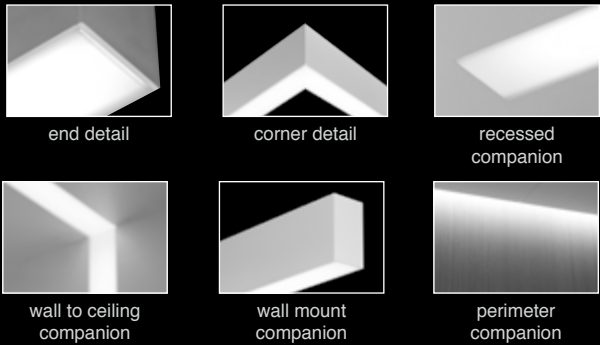
Series	LEDs	Drive Current	Color temperature	Distribution	Voltage	Mounting	Control Options
DSXW1 LED	10C 10 LEDs (one engine) 20C 20 LEDs (two engines)	350 350 mA 530 530 mA 700 700 mA 1000 1000 mA (1 A)	30K 3000 K 40K 4000 K 50K 5000 K AMBPC Amber phosphor converted	T2S Type II Short T2M Type II Medium T3S Type II Short T3M Type III Medium T4M Type IV Medium TFTM Forward Throw Medium ASVDF Asymmetric diffuse	MVOLT ¹ 120 ¹ 208 ¹ 240 ¹ 277 ¹ 347 ² 480 ²	Shipped included (blank) Surface mounting bracket BBW Surface-mounted back box (for conduit entry) ³	Shipped installed PE Photoelectric cell, button type ⁴ DMG 0-10V dimming driver (no controls) PIR 180° motion/ambient light sensor, <15' mtg ht ⁵ PIRH 180° motion/ambient light sensor, 15-30' mtg ht ¹ PIR1FC3V Motion/ambient sensor, 8-15' mounting height, ambient sensor enabled at 1ft ⁶ PIRH1FC3V Motion/ambient sensor, 15-30' mounting height, ambient sensor enabled at 1ft ⁶ ELCW Emergency battery backup (includes external component enclosure) ⁷

Other Options	Finish (required)
Shipped installed SF Single fuse (120, 277 or 347V) ⁷ DF Double fuse (208, 240 or 480V) ⁷ HS House-side shield ⁸ SPD Separate surge protection ⁹	Shipped separately ⁸ BSW Bird-deterrent spikes WG Wire guard VG Vandal guard DDL Diffused drop lens

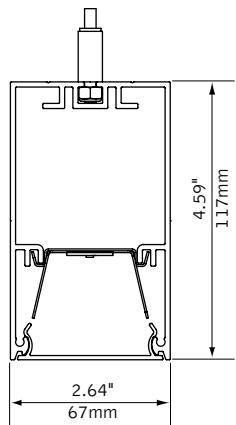
Accessories	NOTES
Ordered and shipped separately.	
DSXWH5 U House-side shield (one per light engine)	1 MVOLT driver operates on any line voltage from 120-277V (50/60 Hz). Specify 120, 208, 240 or 277 options only when ordering with fusing (SF, DF options), or photocontrol (PE option).
DSXWBSW U Bird-deterrent spikes	2 Only available with 20C, 700mA or 1000mA. Not available with PIR or PIRH.
DSXW1WG U Wire guard accessory	3 Back-box ships installed on fixture. Cannot be field installed. Cannot be ordered as an accessory.
DSXW1VG U Vandal guard accessory	4 Photocontrol (PE) requires 120, 208, 240, 277 or 347 voltage option. Not available with motion/ambient light sensors (PIR or PIRH).
	5 PIR and PIR1FC3V specifies the Sensor Switch SBGR-10-ODP control; PIRH specifies the Sensor Switch SBGR-6-ODP control; see Motion Sensor Guide for details. Includes ambient light sensor. Not available with "PE" option (button type photocell). Dimming driver standard. Not available with 20 LED/1000 mA configuration (DSXW1 LED 20C 1000).
	6 Cold weather (20C) rated. Not compatible with conduit entry applications. Not available with BBW mounting option. Not available with fusing. Not available with 347 or 480 voltage options. Emergency components located in back box housing. Emergency mode IES files located on product page at www.lithonia.com
	7 Single fuse (SF) requires 120, 277 or 347 voltage option. Double fuse (DF) requires 208, 240 or 480 voltage option. Not available with ELCW.
	8 Also available as a separate accessory; see Accessories information.
	9 See the electrical section on page 3 for more details.



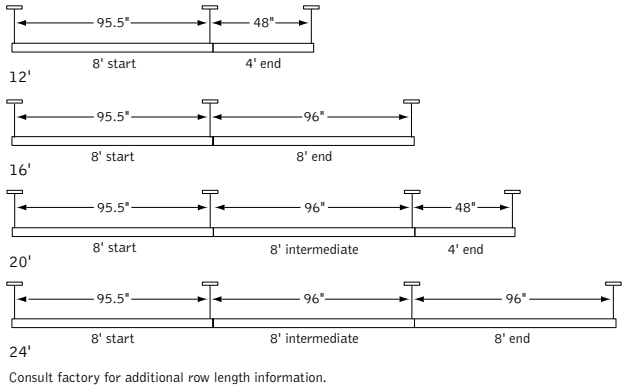
Seem[®] 2
LED



DIMENSIONAL DATA



MOUNTING INFORMATION



FEATURES

Narrow extruded aluminum 2.5" linear direct LED.

Individual units and continuous runs in 1' increments.

Frosted acrylic lens provides uninterrupted illumination, without pixels or shadows.

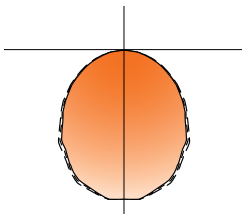
LED position and lens material optimized to provide the perfect blend of high performance and visual comfort.

Choice of output levels to meet a wide variety of application needs.

Connected Solutions: Integrates with wired and wireless building lighting control systems.

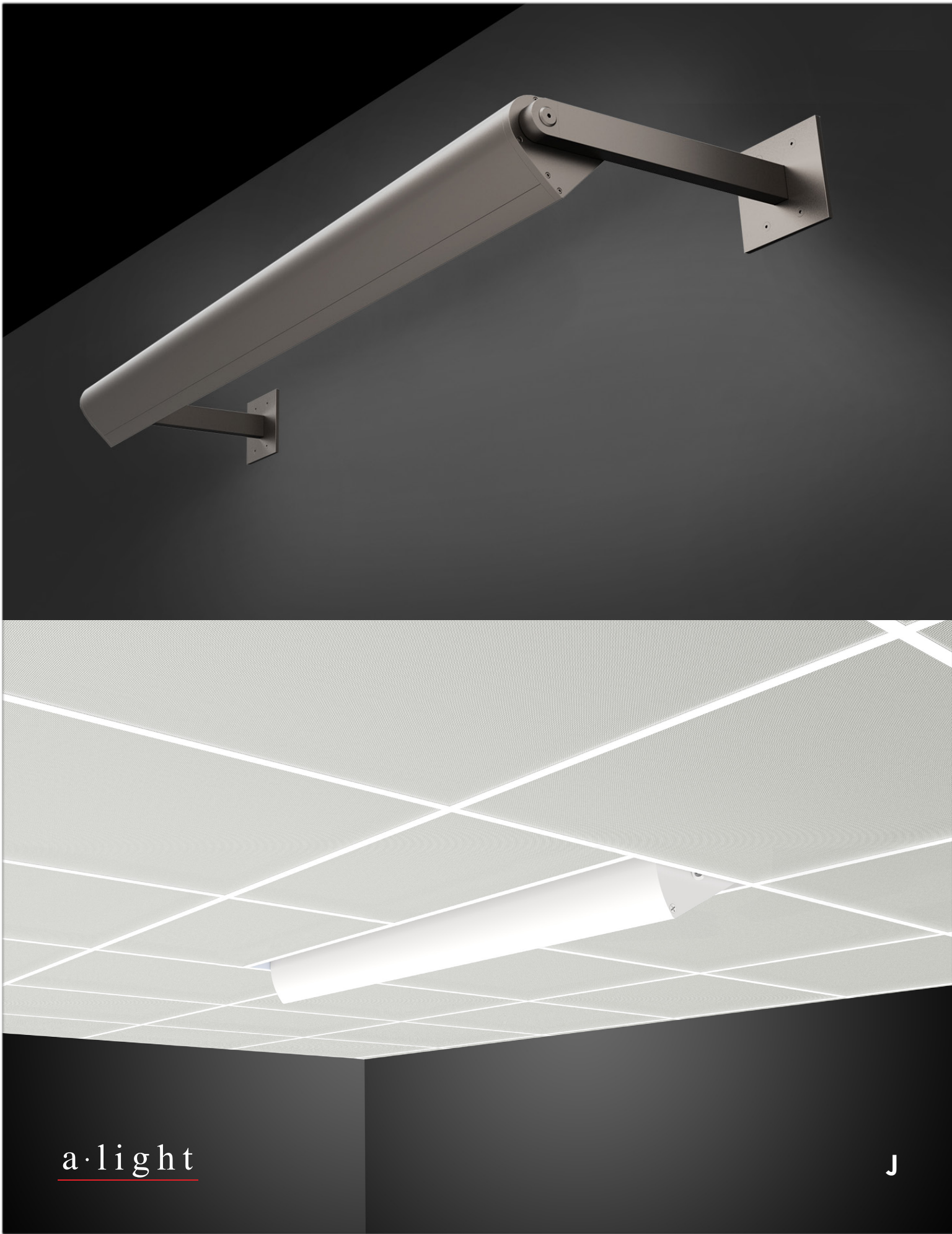
Preferred Light: Lighting for better color rendition and human preference.

PERFORMANCE



4' Flush Lens
Nominal output:
250 Lumens per foot
Delivered Lumens: 1000lm
Total System Watts: 13W

Photometric performance is measured in accordance with IESNA LM-79.
Visit focalpointlights.com for complete photometric data.



FEATURES & SPECIFICATIONS

INTENDED USE — The BLT Best-in-Value Low Profile LED luminaire features a popular center basket design that offers a clean, versatile style and volumetric distribution. High efficacy LED light engines deliver energy savings and low maintenance compared to traditional sources. An extensive selection of configurations and options make the BLT the perfect choice for many lighting applications including schools, offices and other commercial spaces, retail, hospitals and healthcare facilities. The low profile BLT design (2-3/8") also makes it an excellent choice for renovation projects.

CONSTRUCTION — Prior to fabrication, BLT components are coated with a proprietary paint blend and die-formed for dimensional consistency.

The reflector is finished with a high reflective matte white powder paint for improved aesthetics and increased light diffusion.

End plates contain easy-to-position integral T-bar clips for securely attaching the luminaire to the T-grid. For additional T-grid security, optional screw on T-bar clips are available.

Diffusers are extruded from impact modified acrylic for increased durability.

LED boards and drivers are accessible from the plenum.

OPTICS — Volumetric illumination is achieved by creating an optimal mix of light to walls, partitions and vertical and horizontal work surfaces – rendering the interior space, objects and occupants in a more balanced, complementary luminous environment. High performance extruded acrylic diffusers conceal LEDs and efficiently deliver light in a volumetric distribution. Four diffuser choices available - curved and square designs with linear prisms or a smooth frosted finish.

ELECTRICAL — Long-life LEDs, coupled with high-efficiency drivers, provide superior quantity and quality of illumination for extended service life. 80% LED lumen maintenance at 60,000 hours (L80/60,000). Color Variation within 3-step MacAdam ellipse (3SDCM).

Non-Configurable BLT: Generic 0-10 volt dimming driver. Dims to 10%

Configurable BLT: available in High Efficiency (HE) versions for applications where a lower wattage (over the standard product) is required. The High Efficiency versions deliver >130 LPW and can be specified via the Lumen Package designations in the Ordering Information below.

eldoLED driver options deliver choice of dimming range, and choices for control, while assuring flicker-free, low-current inrush, 89% efficiency and low EMI.

Optional integrated nLight® controls make each luminaire addressable - allowing them to digitally communicate with other nLight enabled controls such as dimmers, switches, occupancy sensors and photocells. Connection to nLight is simple. It can be accomplished with integrated nLight AIR wireless RIO, RES7 sensors, or through standard Cat-5 cabling. nLight offers unique plug-and-play convenience as devices and luminaires automatically discover each other and self-commission. nLight AIR is commissioned easily through an intuitive model app.

Lumen Management: Unique lumen management system (option N80) provides on board intelligence that actively manages the LED light source so that constant lumen output is maintained over the system life, preventing the energy waste created by the traditional practice of over-lighting.

Step-level dimming option allows system to be switched to 50% power for compliance with common energy codes while maintaining fixture appearance.

Driver disconnect provided where required to comply with US and Canadian codes.

SENSOR — Integrated sensor (individual control): Sensor Switch MSD/ADXC (Passive infrared (PIR)) or MSD/PDT/ADXC (PIR/Microphonics Dual Tech (PDT)) integrated occupancy sensor/automatic dimming photocell allows the luminaire to power off when the space is unoccupied or enough ambient light is entering the space. See page 4 for more details on the integrated sensor.

Integrated Sensor (nLight Wired Networking): This sensor is nLight-enabled, meaning it has the ability to communicate over an nLight network. When wired, using CAT-5 cabling, with other nLight-enabled sensors, power packs, or WallPods, an nLight control zone is created. Once linked to a Gateway, directly or via a Bridge, the zone becomes capable of remote status monitoring and control via SensorView software. See page 4 for the nLight sensor options.

Integrated Smart Sensor (nLight Air Wireless Platform): The RES7 sensor is nLight AIR enabled, meaning it has the ability to communicate over the wireless nLight control platform. It is available with an automatic dimming photocell, or either a digital PIR or a microphonics (PDT) dual technology occupancy sensor. It pairs to other luminaires and wall switches through our mobile app, CLAIRITY, which allows for simple sensor adjustment. See page 4 for more details on the Integrated Smart Sensor.

INSTALLATION — The BLT's low profile design of only 2-3/8" provides increased installation flexibility especially in restrictive plenum applications. The BLT fits into standard 15/16" and narrow 9/16" T-grid ceiling systems.

Suitable for damp location.

For recessed mounting in hard ceiling applications, Drywall Grid Adapters (DGA) are available as an accessory. See Accessories section.

LISTINGS — CSA Certified to meet U.S. and Canadian standards. IC rated.

DesignLights Consortium® (DLC) Premium qualified product. Not all versions of this product may be DLC Premium qualified. Please check the DLC Qualified Products List at www.designlights.org/QPL to confirm which versions are qualified.

WARRANTY — 5-year limited warranty. Complete warranty terms located at: www.acuitybrands.com/resources/terms-and-conditions

NOTE: Actual performance may differ as a result of end-user environment and application. All values are design or typical values, measured under laboratory conditions at 25 °C. Specifications subject to change without notice.

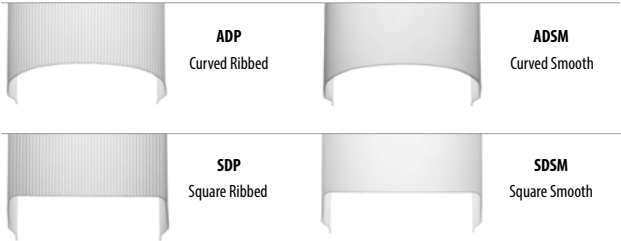
Catalog Number
Notes
Type



Specifications	
Length: 23-3/4 (60.3)	
Width: 23-3/4 (60.3)	
Depth: 2-3/8 (6.0)	
Depth with Air supply/return: 2-3/4 (6.9)	

All dimensions are inches (centimeters) unless otherwise specified.

Multiple Diffuser Options



Capable Luminaire

This item is an A+ capable luminaire, which has been designed and tested to provide consistent color appearance and out-of-the-box control compatibility with simple commissioning.

- All configurations of this luminaire meet the Acuity Brands' specification for chromatic consistency
- This luminaire is part of an A+ Certified solution for nLight® control networks when ordered with drivers marked by a **shaded background***
- This luminaire is part of an A+ Certified solution for nLight control networks, providing advanced control functionality at the luminaire level, when selection includes driver and control options marked by a **shaded background***

To learn more about A+, visit www.acuitybrands.com/aplus.

*See ordering tree for details

Rev: 2019/08/02

CP2020 – SEQUENCE™

4" DIA x 2' H Body - Cord Suspension



Type: Project: [VisaLighting.com/products/Sequence-LED](https://www.VisaLighting.com/products/Sequence-LED)

Order Code: **CP2020**

MODEL BODYLIGHT DOWNLIGHT Optional VOLTAGE OPTICS Optional Downlight FINISH OPTION(S) OAH



This popular luminaire has an LED platform providing practical white light while maintaining a uniformly illuminated body. It is ideal for large venue applications.

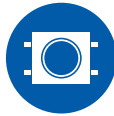
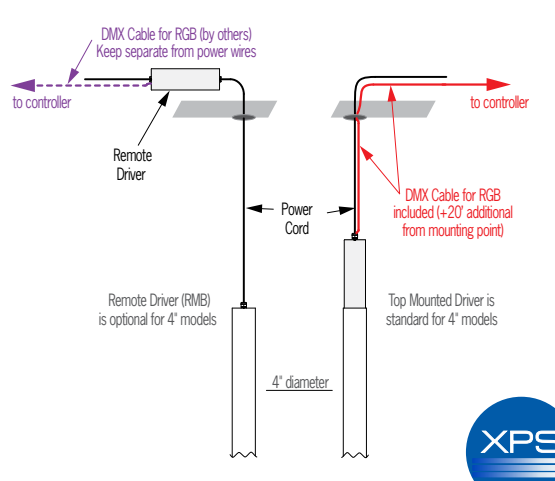
DIMENSIONS

W = Width OAH = Overall Height X = Body Height

OAH is the distance (in inches) from the bottom of the fixture to the ceiling plane. Example - OAH(192) indicates an overall fixture height of 192"

OAH must be specified	
W	Standard OAH
4"	192"
(102 mm)	(4877 mm)
X - with White LED Source	
Top Mounted	RMB
34"	26"
(864 mm)	(660 mm)
X - with RGB Source	
Top Mount	RMB
33-7/8"	21-5/8"
(860 mm)	(549 mm)

DMX Detail



XPS

LED

ETL Listed

5 Year Warranty

800-788-VISA

[VisaLighting.com](https://www.VisaLighting.com)

Page 1



FEATURES & SPECIFICATIONS

INTENDED USE — A general purpose and energy-efficient surface-mounted or suspended LED fixture, suitable for wet, damp and/or cold locations. For vapor-tight demanding environments where moisture or dust is a concern and where relatively low fixture mounting heights and wide fixture spacing are common. Typical applications include industrial facilities, parking garages, retail malls, multi-purpose rooms, garden centers, and food processing **Certain airborne contaminants can diminish the integrity of acrylic and/or polycarbonate. Click here for Acrylic-Polycarbonate Compatibility table for suitable use.**

CONSTRUCTION — One-piece SVA fiberglass housing with integral perimeter channel utilizing continuous poured-in-place NEMA 4X gasket. Approved as a wireway and for through wiring. Captive polymeric latches are standard. Stainless steel latches (#316) available as an option for food processing or more demanding applications.

Power connection is easily accomplished through pre-drilled holes at each end populated with wet location fittings for maximum flexibility. Fixture easily mounts to ceilings and other solid structures, or can be suspended with chain, cable or rod using stainless steel mounting brackets (included).

OPTICS — Injection molded, acrylic lens (.080" thick) provides high impact-resistance comparable to 100% DR. For L48 Medium Distribution, a UV stabilized polycarbonate diffuser is available (.080" thick) in clear or frosted for additional impact strength where vandal protection is desired.

Expected service life of 60,000 hours at 80% lumen maintenance (L80); predicted life of more than 100,000 hours.

ELECTRICAL — Utilizes high-efficiency LEDs mounted to core circuit boards. High-efficiency drivers operate 120 thru 277V, 347V and 480V offered with 0-10 volt dimming, allowing granular control when coupled with wireless networking controls. Integral 6kV/3kA surge protection, tested in accordance to IEEE/ANSI standards.

INSTALLATION — Fixture can be ceiling or suspended mounted. Pre-punched stainless steel mounting brackets are included (two per luminaire) for easy field-attachment of bolts, screws and other mounting hardware. A covered ceiling is not required to maintain wet location listing or IP rating.

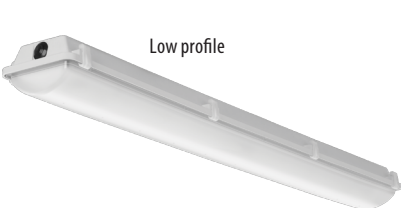
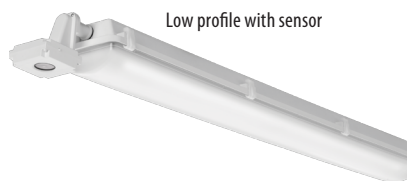
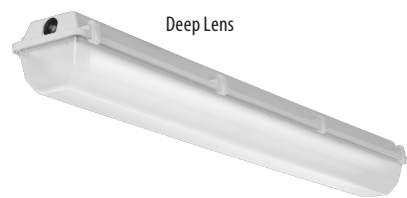
LISTINGS — CSA certified to UL and C-UL standards. Listed for wet locations in ambient temps ranging from -35°C (-31°F) to 25°C (77°F) when fixture is surface mounted or up to 45°C (113°F) when fixture is suspended at least 6" from ceiling. IP65, IP66 and IP67 rated. NSF splash-zone 2 certified and meets FDA/USDA guidelines. Nema 4X rated lens and housing. 1500 PSI hose-down. DesignLights Consortium® (DLC) Premium qualified product and DLC qualified product. Not all versions of this product may be DLC Premium qualified or DLC qualified. Please check the DLC Qualified Products List at www.designlights.org/QPL to confirm which versions are qualified.

WARRANTY — 5-year limited warranty. Complete warranty terms located at: www.acuitybrands.com/CustomerResources/Terms_and_conditions.aspx

NOTE: Actual performance may differ as a result of end-user environment and application. All values are design or typical values, measured under laboratory conditions at 25 °C. Specifications subject to change without notice.

Catalog Number
Notes
Type

Low-Profile Enclosed and Gasketed Industrial



A+ Capable Luminaire

This item is an A+ capable luminaire, which has been designed and tested to provide consistent color appearance and out-of-the-box control compatibility with simple commissioning.

- All configurations of this luminaire meet the Acuity Brands' specification for chromatic consistency
- This luminaire is part of an A+ Certified solution for nLight® or XPoint™ Wireless control networks marked by a shaded background*

To learn more about A+, visit www.acuitybrands.com/aplus.

*See ordering tree for details

INDUSTRIAL

FEM LED

Essex Public Safety Facility
Schedule Overview

	Start	Finish	2018												2019																																																																																																																																																																																																																																																																																																																																																																																																																																																																																																																																																																																																																																																																																																																																																																																																																																																																																																																																																																																																																																																																																																																																																																																																																																																																																																																				
			Sep	Oct	Nov	Dec	Jan	Feb	March	April	May	June	July	Aug	Sep	Oct	Nov	Dec	Jan	Feb	March	April																																																																																																																																																																																																																																																																																																																																																																																																																																																																																																																																																																																																																																																																																																																																																																																																																																																																																																																																																																																																																																																																																																																																																																																																																																																																																																													
			27	3	10	17	24	1	8	15	22	29	5	12	19	26	3	10	17	24	31	7	14	21	28	4	11	18	25	1	8	15	22	29	5	12	19	26	2	9	16	23	30	7	14	21	28	4	11	18	25	1	8	15	22	29																																																																																																																																																																																																																																																																																																																																																																																																																																																																																																																																																																																																																																																																																																																																																																																																																																																																																																																																																																																																																																																																																																																																																																																																																																																																											
Architect Selection/Options Analysis	27-Aug-18	11-Feb-19																																																																																																																																																																																																																																																																																																																																																																																																																																																																																																																																																																																																																																																																																																																																																																																																																																																																																																																																																																																																																																																																																																																																																																																																																																																																																																																																	

*If funding is not approved until Fil Town Meeting, the construction commencement date will be delayed accordingly.

Essex Public Safety Facility Schedule Overview

[illegible]

*If funding is not approved until Fall Town Meeting, the construction commencement date will be 2023.

Essex Public Safety Building Project

Town Building Committee

Sign-In List

Location: Town Hall, 3rd floor

Date: 8/21/2019

Name

Email

- 1 Tim Dorman tim.dorman@NV5.com
- 2 Peter LeVassar peterlevassar2@gmail
- 3 Ruth Pereen ruthpereen@gmail.com
- 4 PAUL FRANCO pfrancis@essexma.org
- 5 DANIEL BRUCE dbruce@essexma.org
- 6 Peter Phippen on file
- 7 Colleen Knos Colleenmeno@gmail.com
- 8 Daniel McDuffe ddoucette@essexma.org
- 9 Ramie Reader Ramie 6582 @ comcast.net
- 10 Rob Gosh ~~Atorby~~ @ nat.cby@gmail.com
- 11 Mark McKenna markwmckenna@comcast.net
- 12 Brendan Zubricki bzubricki@essexma.org
- 13 Lisa O'Donnell lodonnell@essexma.org
- 14 STUART W. PRATT SPRATTE, HUNNEMAN, RE
- 15 STEVE ROBERTS STEVE ROBERTS, J
JOHNSON-ROBERTS.COM
- 16 MICHAEL KENNEDY
- 17 PHIL O'BRIEN pobrien@johnson-roberts.com

18

19

20

Town Building Committee
Board of Selectmen
Wednesday, August 21, 2019
7:00 p.m.
Town Hall, 3rd Floor Auditorium
30 Martin Street

AGENDA

- Questions from the public.
- Approve minutes from July 24, 2019.
- General design update from Johnson Roberts Associates (JRA).
- Review permitting status with respect to Essex Conservation Commission, including discussion concerning the Commission's preferred storm water management system design.
- Review Planning Board Site Plan Review approval, including discussion of preferred exterior lighting color temperature.
- Discuss how our cost estimators are able to consider the project from the eyes of a contractor.
- Address updated design comments submitted by resident Edward Neal (following up on his May, 2019 comments), both at the last meeting and subsequently.
- Discuss Selectmen's decision with respect to pre-construction removal of plants by residents.
- Discuss continued, pre-construction use and management of property at 11 John Wise Avenue, including the results of the pre-demolition asbestos survey.
- Review of Mass DOT present position with respect to proposed speed limit change.
- Review project schedule, including status of specific permits and activities necessary to obtain building permit, and upcoming milestones, NV5.
- Review status of contractor prequalification process.
- Review updated budget for fixtures, furnishings, and equipment.
- Review of upcoming schedule (meetings and other events), including format and materials for upcoming public forums and plans for September 23 Special Town Meeting.
- Items not contemplated by the Chairman in advance of the meeting posting deadline.
- Public comment.
- Adjourn.