

Map C: Natural Resources Priority Sites

(Courtesy of MAPC)

EO-418 MAP 3: EXISTING NATURAL RESOURCES IDENTIFICATION PRIORITY SITES

LAND USE CATEGORIES

- AGRICULTURE
- NATURAL LANDS/WOODLANDS VEGETATION
- INDUSTRIAL/TRANSPORTATION/MINING
- OPEN LAND
- MEDIUM DENSITY RESIDENTIAL
- HIGH DENSITY RESIDENTIAL
- MEDIUM DENSITY RESIDENTIAL
- LOW DENSITY RESIDENTIAL
- COMMERCIAL
- WATER

OPEN SPACE

- MUNICIPALLY OWNED
- PERMANENTLY PROTECTED / CONSERVATION RESTRICTION

WATER

- STREAMS
- INTERMITTENT STREAMS
- WATER BODIES

- SUB-BARSH BOUNDARY
- ACRES
- ZONE II
- WETLANDS
- INTER-RELIGIOUS PROTECTION AREA

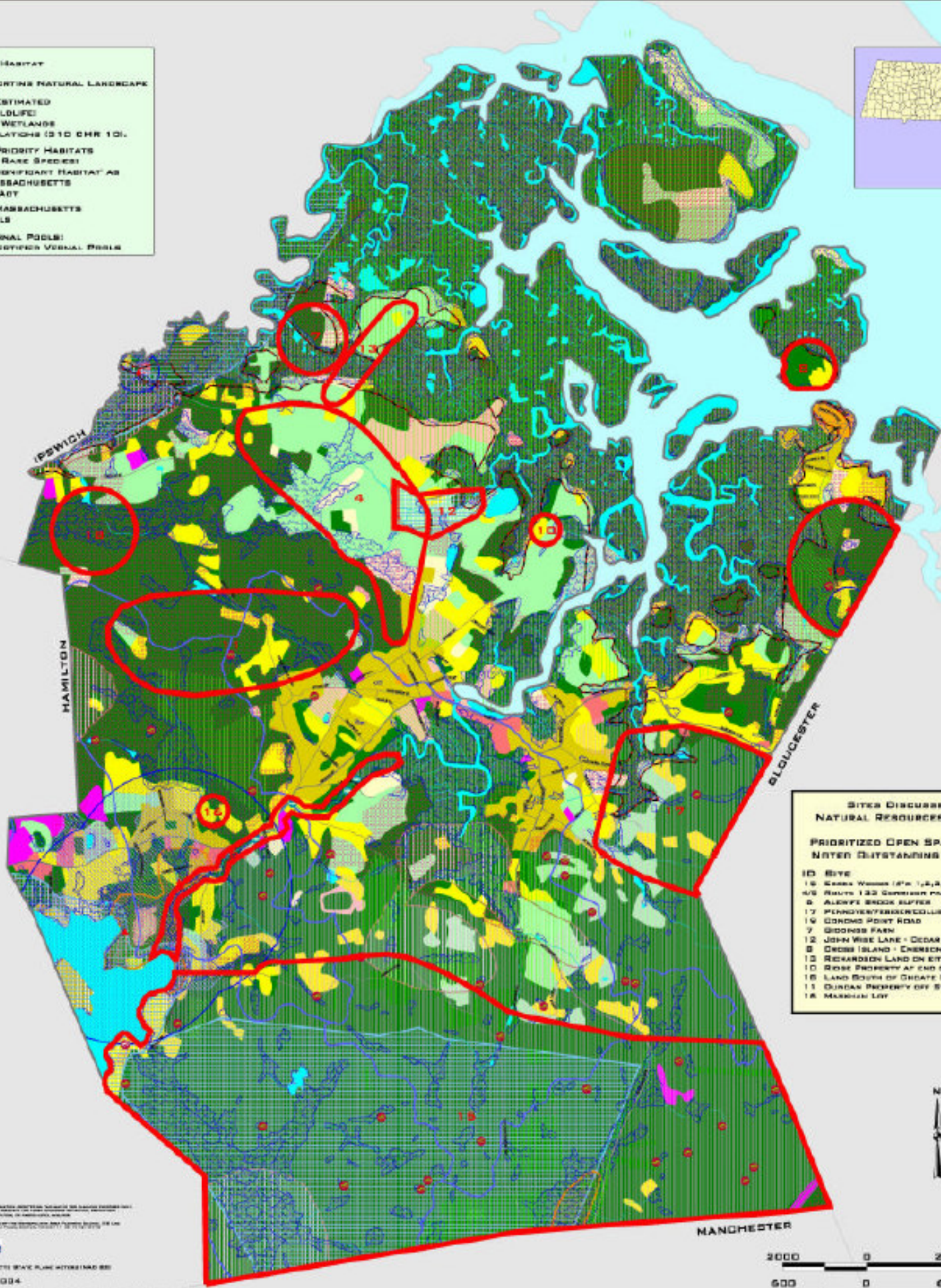
PRIORITY OPEN SPACE PARCELS

- PUBLIC WATER SUPPLY
- CERTIFIED VERNAL POOL
- POTENTIAL VERNAL POOL
- ANADROMOUS FISH

- AREAS OF CRITICAL ENVIRONMENTAL CONCERN
- SIGMAP CORE HABITAT
- SIGMAP SUPPORTING NATURAL LANDSCAPE
- ESTIMATED HABITATS OF RARE WILDLIFE
- PRIORITY OPEN SPACE SPECIES HABITATS

- ### ROADS
- INTERSTATE
 - ARTERIAL
 - COLLECTOR
 - LOCAL

- ¹ NHESP SIGMAP CORE HABITAT
- ² NHESP SIGMAP SUPPORTING NATURAL LANDSCAPE
- ³ NHESP 1999-2001 ESTIMATED HABITATS FOR RARE WILDLIFE FOR USE WITH THE MA WETLANDS PROTECTION ACT REGULATIONS (310 CMR 101)
- ⁴ NHESP 1999-2001 PRIORITY HABITATS FOR STATE-PROTECTED RARE SPECIES (NOT EQUIVALENT TO "SIGNIFICANT HABITAT" AS DESIGNATED UNDER MASSACHUSETTS ENDANGERED SPECIES ACT)
- ⁵ NHESP 1999-2001 MASSACHUSETTS CERTIFIED VERNAL POOLS
- ⁶ NHESP POTENTIAL VERNAL POOLS (NOT EQUIVALENT TO CERTIFIED VERNAL POOLS)



SITES DISCUSSED AT ESSEX NATURAL RESOURCES FORUM 4/29/03

PRIORITY OPEN SPACE PARCELS WITH NOTED OUTSTANDING CHARACTERISTICS

ID	NOTE	VOTES
18	Essex Woods (774, 1, 2, 3, 4, 5, 6, 7, 8, 9, 10, 11, 12, 13, 14, 15, 16, 17, 18)	20
1/5	Essex Woods (774, 1, 2, 3, 4, 5, 6, 7, 8, 9, 10, 11, 12, 13, 14, 15, 16, 17, 18)	20
8	ALLEN'S BRIDGE BUFFER	23
17	PENNINGTON/BRIDGE COLLEGE	21
16	CONDOS POINT ROAD	16
7	GRONDS FARM	15
12	JOHN WISE LANE - CEDAR BROOK FARM	13
9	CROSS ISLAND - CHEMICH	12
13	REICHARDSON LAND ON EITHER SIDE OF ROAD	10
10	20% PROPERTY AT END OF BRIDGE STREET	9
15	LAND SOUTH OF DUDLEY STREET	9
11	CLARK PROPERTY OFF SIDNEY STREET	5
18	MARSHALL LAY	0



ESSEXIAN RESIDENCE SOUTH MASSACHUSETTS STATE PLANNING BOARD
DATE: MAY 27, 2004



CLASSIFIED UNDER EXECUTIVE ORDER 418 BY THE MASSACHUSETTS DEPARTMENT OF PUBLIC AND COMMUNITY DEVELOPMENT, MASSACHUSETTS DEPARTMENT OF ECONOMIC DEVELOPMENT, EXECUTIVE OFFICE OF TRANSPORTATION AND CONSTRUCTION, AND REGULATORY OFFICE OF ENVIRONMENTAL AFFAIRS