

EO-418 MAP 1:
EXISTING CONDITIONS AND FUTURE LAND USE
Essex

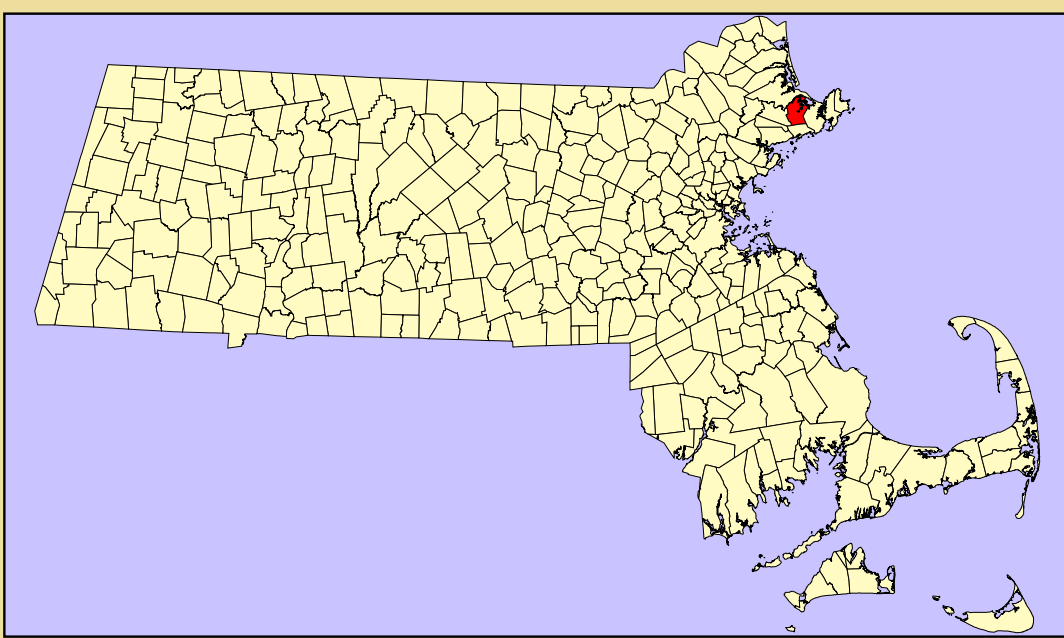
EXISTING LANDUSE CATAGORIES

- A(AGRICULTURE)
- N(NATURAL LAND/UNDISTURBED VEGETATION)
- I(INDUSTRIAL/TRANSPORTATION/MINING)
- O(OPEN LAND)
- U(URBAN OPEN/INSTITUTIONAL/RECREATION)
- HDR(HIGHER DENSITY RESIDENTIAL)
- MDR(MEDIUM DENSITY RESIDENTIAL)
- LDR(LOW DENSITY RESIDENTIAL)
- C(COMMERCIAL)
- W(WATER)

POTENTIALLY DEVELOPABLE LAND
BY CURRENT ZONING

- GENERAL DISTRICT
- GENERAL DISTRICT IN ROADSIDE AREA
- GENERAL DISTRICT IN WATERSHED PROTECTION AREA

ZONING DISTRICT
BOUNDARY



WATER

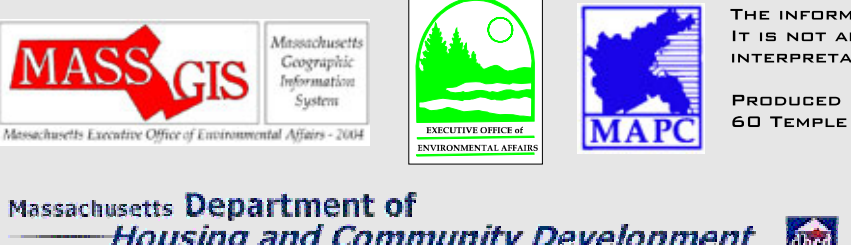
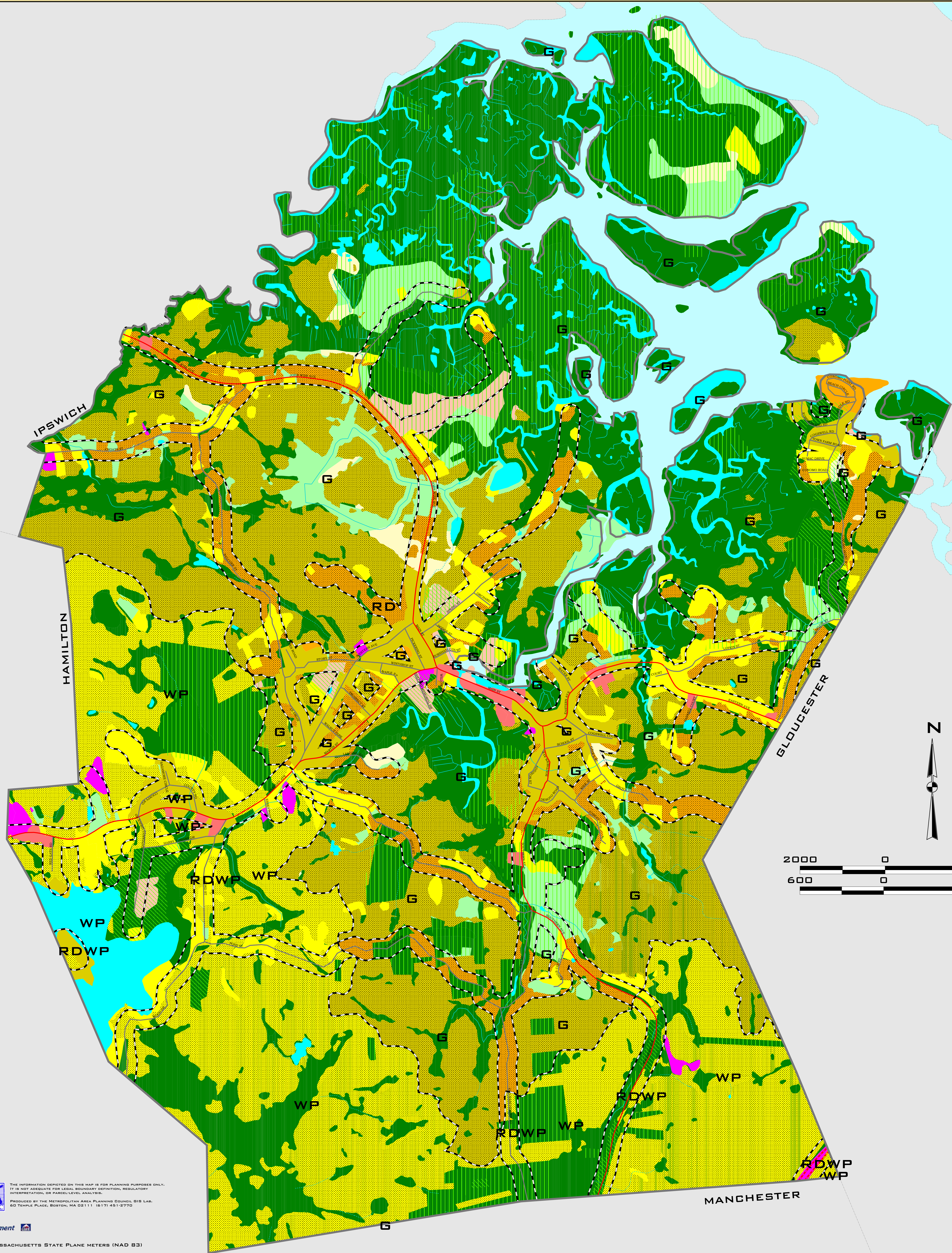
- STREAMS
- INTERMITTENT STREAMS
- WATER BODIES

OPEN SPACE

- MUNICIPALLY OWNED
- PERMANENTLY PROTECTED / CONSERVATION RESTRICTION

ROADS

- INTERSTATE
- ARTERIAL
- COLLECTOR
- LOCAL



THE INFORMATION DERIVED ON THIS MAP IS FOR PLANNING PURPOSES ONLY.
IT IS NOT ADEQUATE FOR LEGAL BOUNDARY DEFINITION, REGULATORY
INTERPRETATION, OR PARCEL-LEVEL ANALYSIS.
PRODUCED BY THE METROPOLITAN AREA PLANNING COUNCIL, 818 LEB
60 THURLE PLACE, BOSTON, MA 02111 (617) 451-2770

Massachusetts Department of
Housing and Community Development

COORDINATE REFERENCE SYSTEM: MASSACHUSETTS STATE PLANE METERS (NAD 83)

DATE: MAY 27, 2004

FUNDED UNDER EXECUTIVE ORDER 418 BY THE MASSACHUSETTS DEPARTMENT OF HOUSING AND COMMUNITY
DEVELOPMENT, MASSACHUSETTS DEPARTMENT OF ECONOMIC DEVELOPMENT, EXECUTIVE OFFICE OF
TRANSPORTATION AND CONSTRUCTION, AND EXECUTIVE OFFICE OF ENVIRONMENTAL AFFAIRS