

EO-418 MAP 5:  
ECONOMIC DEVELOPEMNT  
Essex

EXISTING LANDUSE CATAGORIES

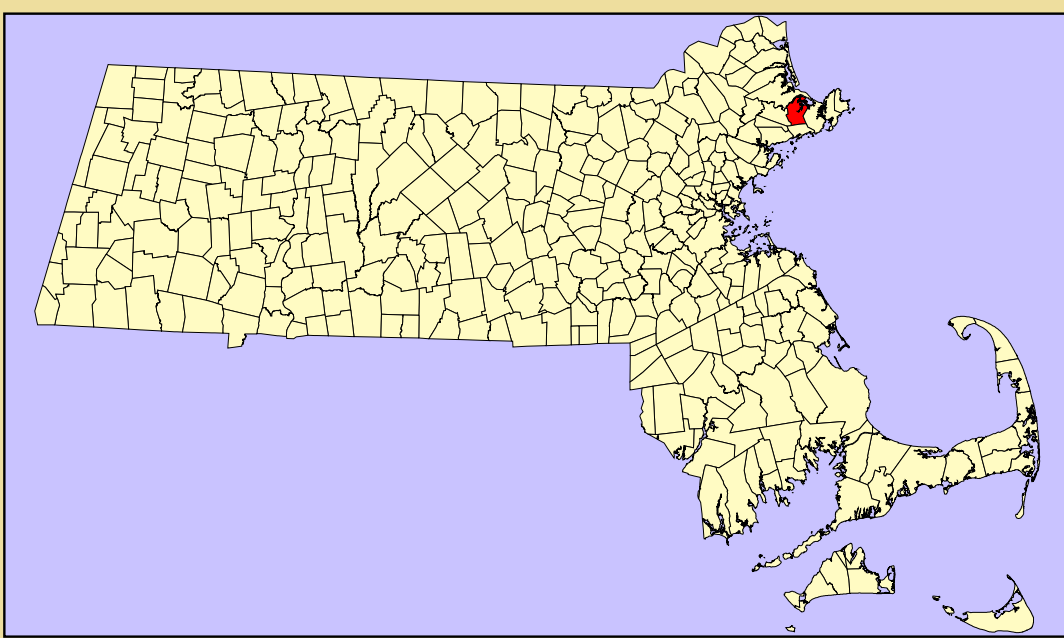
- A(AGRICULTURE)
- N(NATURAL LAND/UNDISTURBED VEGETATION)
- I(INDUSTRIAL/TRANSPORTATION/MINING)
- O(OPEN LAND)
- U(URBAN OPEN/INSTITUTIONAL/RECREATION)
- HDR(HIGHER DENSITY RESIDENTIAL)
- MDR(MEDIUM DENSITY RESIDENTIAL)
- LDR(LOW DENSITY RESIDENTIAL)
- C(COMMERCIAL)
- W(WATER)

POTENTIALLY DEVELOPABLE LAND  
BY CURRENT ZONING

- GENERAL DISTRICT
- GENERAL DISTRICT IN ROADSIDE AREA
- GENERAL DISTRICT IN WATERSHED PROTECTION AREA

ZONING DISTRICT  
BOUNDARY

ECONOMIC DEVELOPMENT OPPORTUNITIES



WATER

- STREAMS
- INTERMITTENT STREAMS
- WATER BODIES

OPEN SPACE

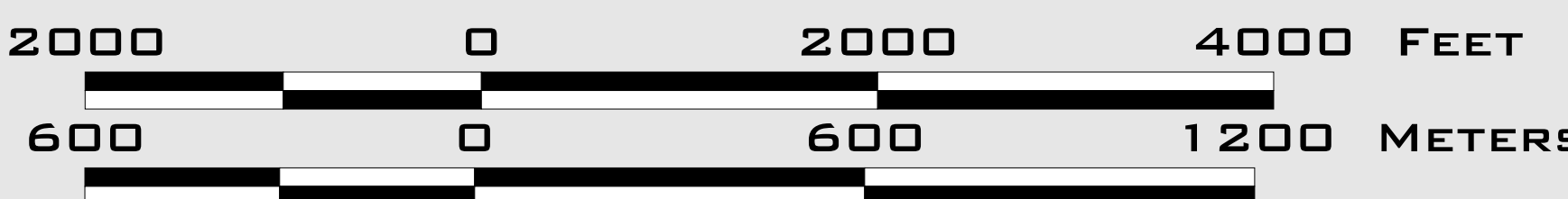
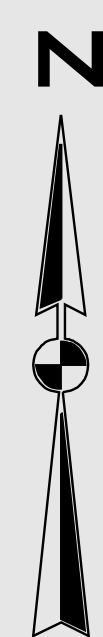
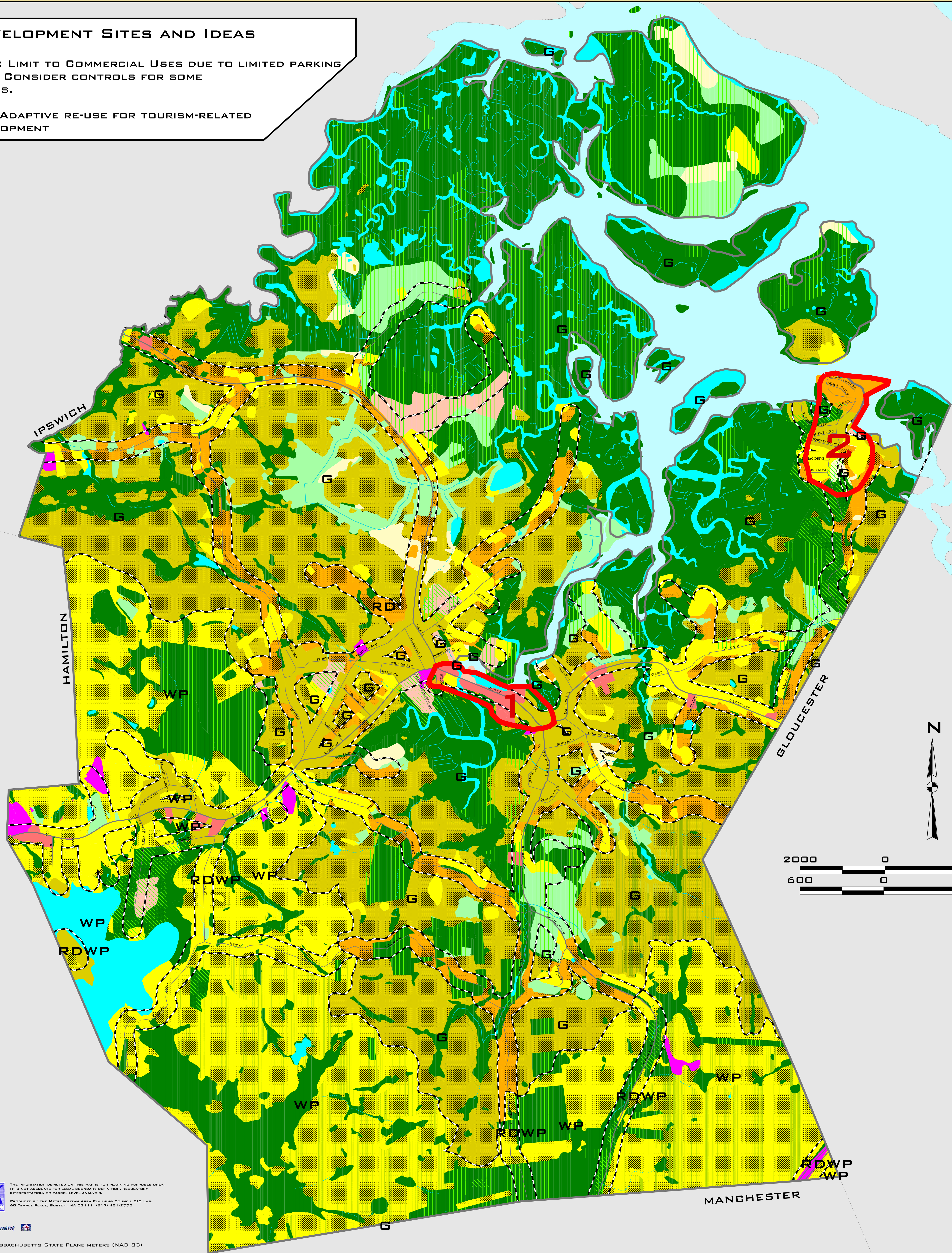
- MUNICIPALLY OWNED
- PERMANENTLY PROTECTED /  
CONSERVATION RESTRICTION

ROADS

- INTERSTATE
- ARTERIAL
- COLLECTOR
- LOCAL

ECONOMIC DEVELOPMENT SITES AND IDEAS

- 1) CAUSEWAY AREA: LIMIT TO COMMERCIAL USES DUE TO LIMITED PARKING AND FLOODING. CONSIDER CONTROLS FOR SOME COMMERCIAL USES.
- 2) CONOMO POINT: ADAPTIVE RE-USE FOR TOURISM-RELATED ECONOMIC DEVELOPMENT



THE INFORMATION DERIVED ON THIS MAP IS FOR PLANNING PURPOSES ONLY.  
IT IS NOT ADEQUATE FOR LEGAL BOUNDARY DEFINITION, REGULATORY  
INTERPRETATION, OR PARCEL-LEVEL ANALYSIS.  
PRODUCED BY THE METROPOLITAN AREA PLANNING COUNCIL, 818 LEB  
60 THURLE PLACE, BOSTON, MA 02111 (617) 451-5770

Massachusetts Department of  
Housing and Community Development

COORDINATE REFERENCE SYSTEM: MASSACHUSETTS STATE PLANE METERS (NAD 83)

DATE: MAY 27, 2004

FUNDED UNDER EXECUTIVE ORDER 418 BY THE MASSACHUSETTS DEPARTMENT OF HOUSING AND COMMUNITY  
DEVELOPMENT, MASSACHUSETTS DEPARTMENT OF ECONOMIC DEVELOPMENT, EXECUTIVE OFFICE OF  
TRANSPORTATION AND CONSTRUCTION, AND EXECUTIVE OFFICE OF ENVIRONMENTAL AFFAIRS