

Essex Town Hall











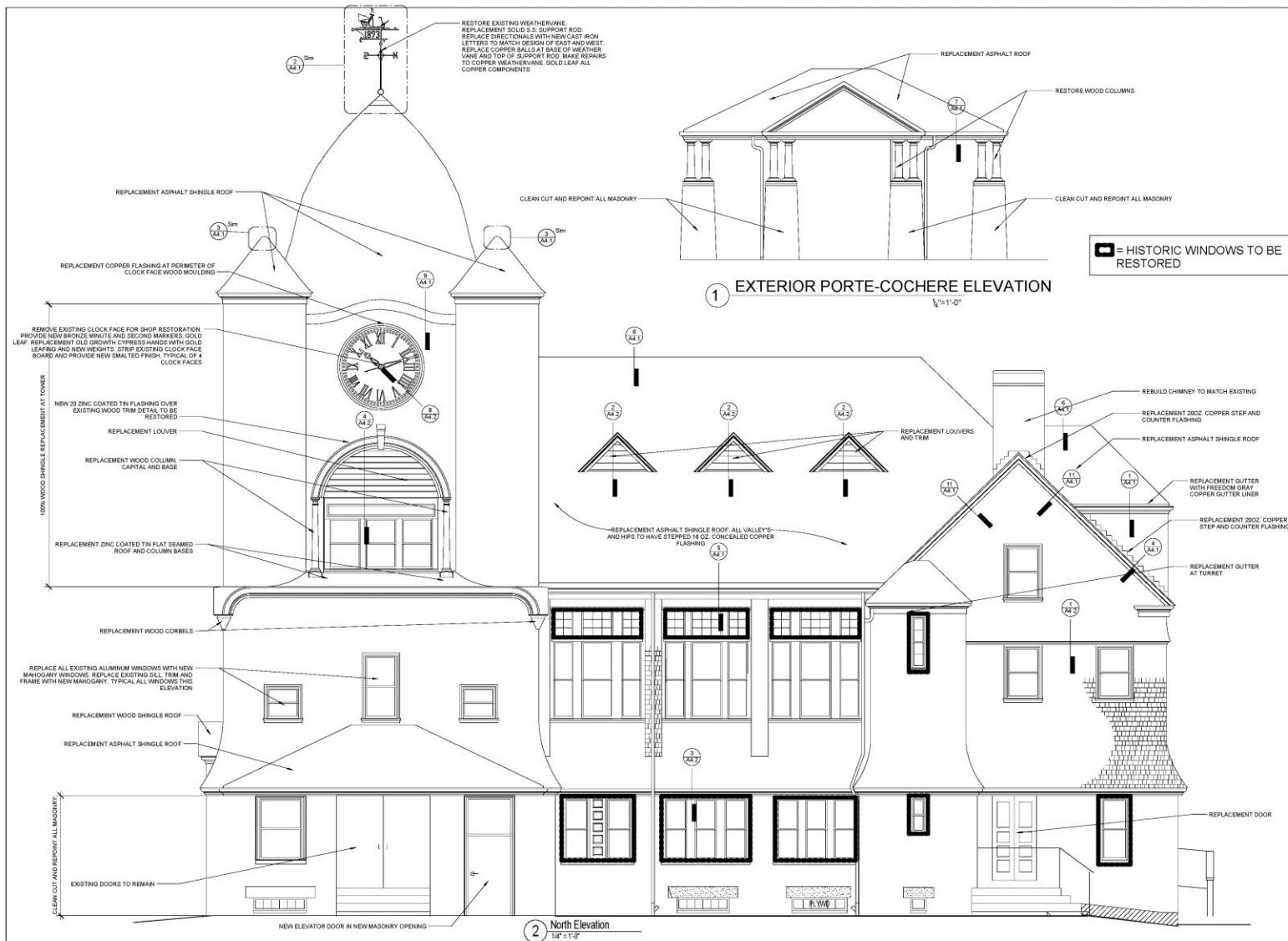












Essex Town Hall
30 Martin Street
Essex, MA
Town of Essex MA

Date: 03/27/2015
Scale: 1/4" = 1'-0"
Drawn By: RAF
Reviewed By: WCK
Project No: 1740

MK & A McGinley Kalsow & Associates, Inc.
ARCHITECTS & PRESERVATION PLANNERS
324 Broadway, P.O. Box 45248
Somerville, MA 02145
617.625.8901 - www.mcginleykalsow.com

North Elevation

No.

A2.1



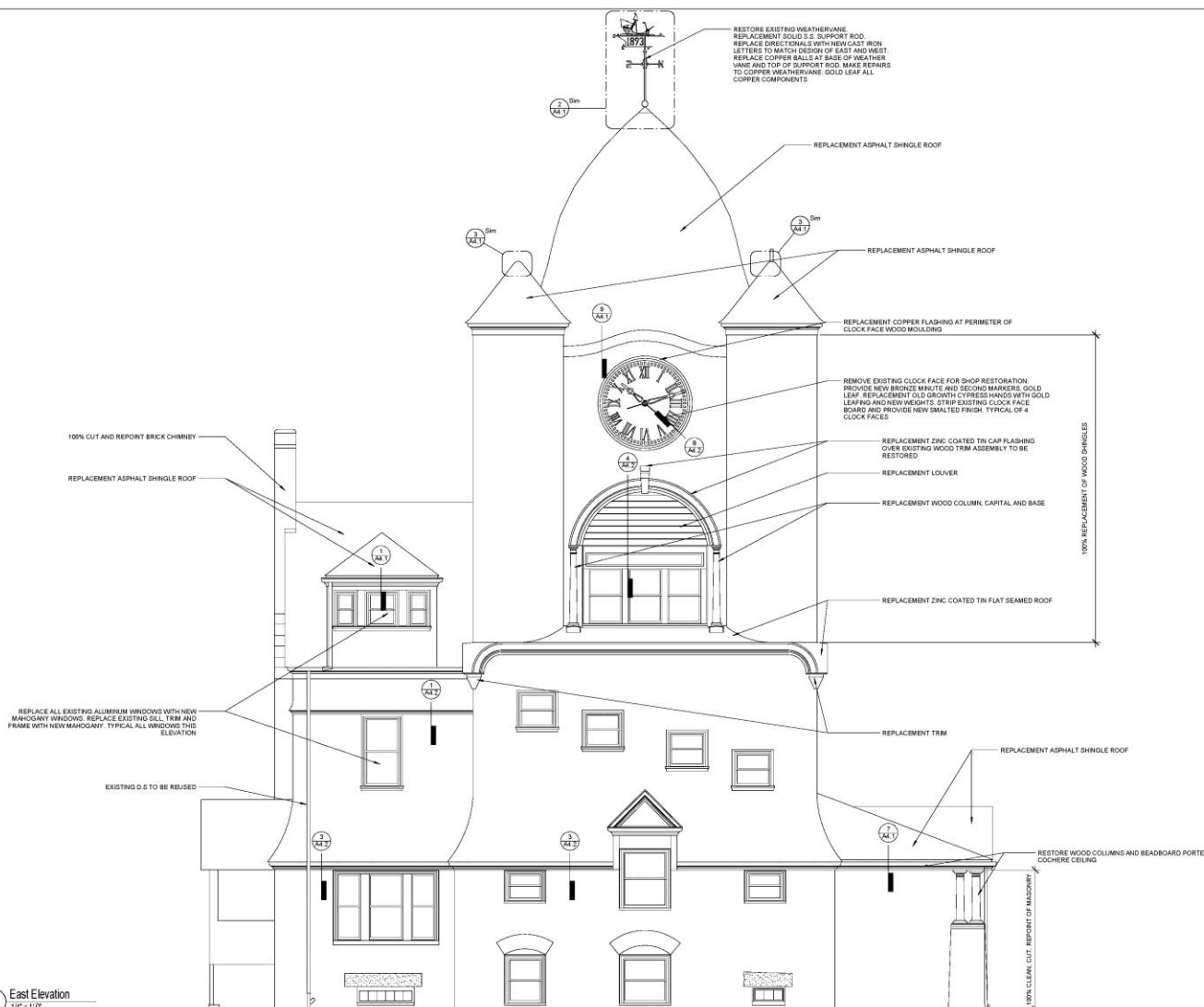
Essex Town Hall
30 Martin Street
Essex, MA
Town of Essex MA

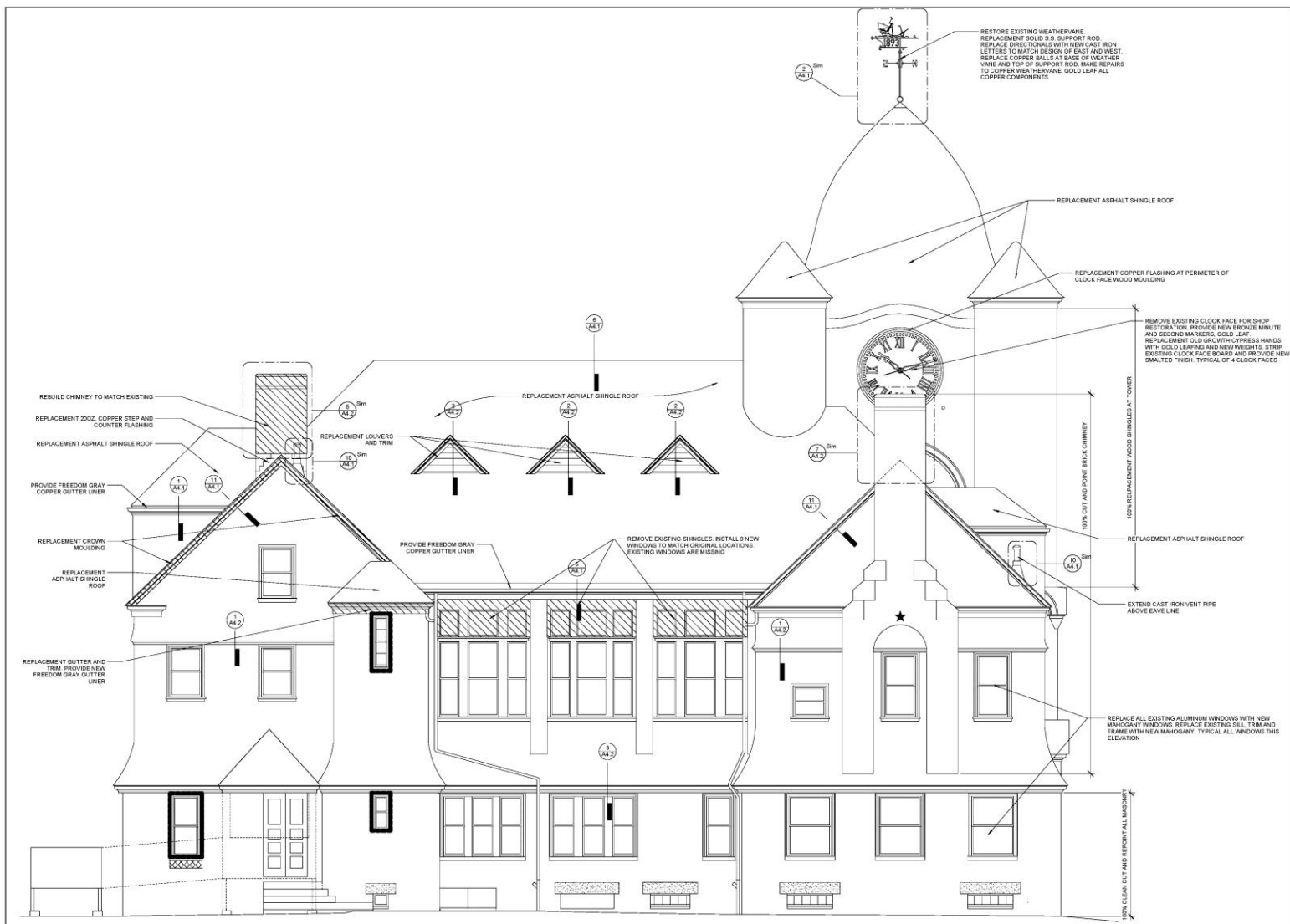
Date: 03/27/2015
Scale: 1/4" = 1'-0"
Drawn By: RAF
Reviewed By: WCK
Project No: 1740

MK & A McGinley Kalsow & Associates, Inc.
ARCHITECTS & PRESERVATION PLANNERS
324 Broadway, P.O. Box 45248
Somerville, MA 02145
617.625.8901 - www.mginleykalsow.com

East Elevation

No.
A2.2





Essex Town Hall
30 Martin Street
Essex, MA
Town of Essex MA

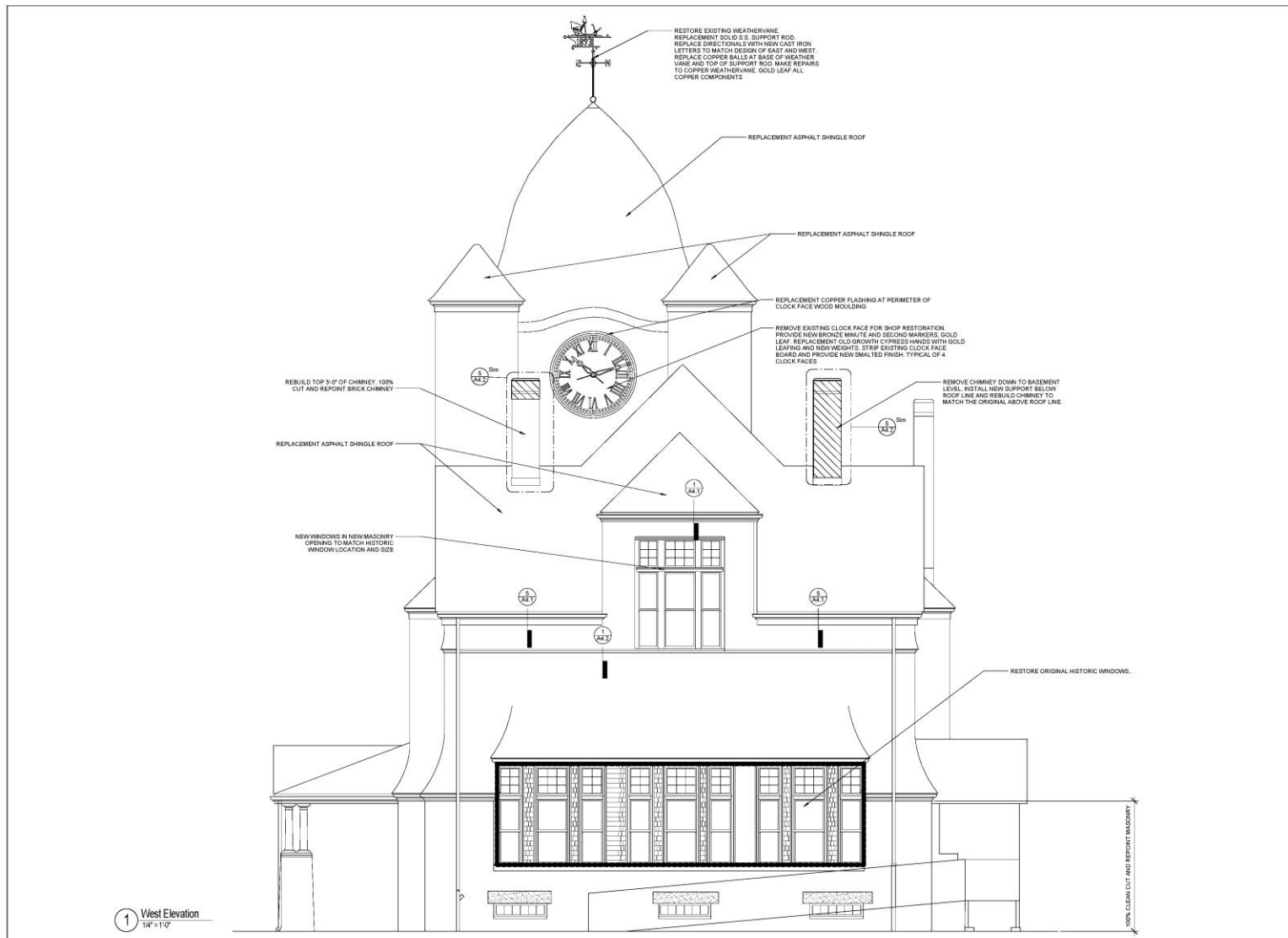
Date: 03/27/2015
Scale: 1/4" = 1'-0"
Drawn By: RAF
Reviewed By: WCK
Project No: 1740

MK & A **McGinley Kalsow & Associates, Inc.**
ARCHITECTS & PRESERVATION PLANNERS
324 Broadway, P.O. Box 45248
Somerville, MA 02145
617.625.8901 - www.mcginleykalsow.com

South Elevation

No

A2.3



Essex Town Hall
30 Martin Street
Essex, MA
Town of Essex MA

Date: 03/27/2015
Scale: 1/4" = 1'-0"
Drawn By: RAF
Reviewed By: WCK
Project No: 1740

MK & A McGinley Kalsow & Associates, Inc.
ARCHITECTS & PRESERVATION PLANNERS
324 Broadway, PO Box 45248
Somerville, MA 02145
617-625-8901 • www.mcginleykalsow.com

West Elevation

No.
A2.4